

# DDOT FINAL ROUTE RECOMMENDATIONS

DDOT Reimagined is a bold new vision for public mobility in Detroit and we are excited to share it with you. The following section provides an in-depth look at the alignment and schedule recommendations for each of the bus routes in the DDOT Reimagined Final Plan.

## Schedule Recommendations

Current (January 2024) and proposed route frequencies and span by day type.

**ROUTE 1 Vernor**  
Tier 2  
EXTENDED

**PROPOSED CHANGES**

Route 1 will be extended to Greenfield Rd and Michigan Ave to improve westside network connections to Route 10 Greenfield and connect with more shopping opportunities. The route will be streamlined to operate via Wyoming St in Dearborn between Vernor Hwy and Michigan Ave. East of Rosa Parks Blvd, the route will operate via Michigan Ave to Rosa Parks Transit Center.

SCHEDULED SERVICE	EXISTING METRICS		PROPOSED	
	FREQUENCY (MIN)	SPAN	FREQUENCY (MIN)	SPAN
<b>Weekday</b>	30	4 a.m. - 1 a.m.	15	4 a.m. - 1 a.m.
<b>Saturday</b>	30	4 a.m. - 1 a.m.	30	4 a.m. - 1 a.m.
<b>Sunday</b>	60	4 a.m. - 12:45 a.m.	30	4 a.m. - 1 a.m.

## Route Info

Key information on the route's tier and recommended alignment changes. These changes are the results of a deep-dive analysis into current service performance, local mobility patterns and unmet needs, and public input from our in-person and online community conversations.

## Route Map

Each route's proposed alignment is shown in orange. The existing alignment is shown in dark green. If the existing route is not visible, the proposed route will operate on the same alignment. The lighter green routes are the rest of the proposed network.

# Tier Definitions

The DDOT *Reimagined* network was designed around a tier-based system to guide investment in transit service levels and future customer amenity, infrastructure, and technology upgrades. With consistent frequencies and service spans in each tier, this cohesive organization makes the service and public schedules easier to understand for customers.

TIERS	DESCRIPTION	WEEKDAY FREQUENCY	WEEKDAY SERVICE SPAN	INVESTMENT
Tier 1	<b>Enhanced Bus Corridor (Future BRT)</b> – Most important routes in the system along the key network spines and major commercial corridors	7.5 - 10 minutes	24 hours	Priority for Enhanced Corridors and future BRT treatment
Tier 2	<b>Frequent Transit</b> – Other high-ridership routes that provide important network role	15 minutes	4 a.m. - 1 a.m. or 24 hours	Future candidates for transit priority
Tier 3	<b>Basic Transit</b> – Provide neighborhood circulation or crosstown connectivity to frequent routes	30 minutes	4 a.m. - 1 a.m.	Service investments will upgrade today's 60-minute routes to the Tier 3 standard.
Tier 4	<b>Lifeline Service</b> – Routes that provide transit coverage for unserved neighborhoods or job centers, or areas with low-demand  <b>No routes are recommended for Tier 4 in this plan.</b>	60 minutes	Demand-based	

# Routes

1 TIER 2	12 TIER 3	31 TIER 2	54 TIER 3
2 TIER 1	13 TIER 3	32 TIER 2	60 TIER 2
3 TIER 1	15 TIER 3	38 TIER 3	67 TIER 2
4 TIER 1	16 TIER 2	39 CONSOLIDATED	68 TIER 3
5 TIER 2	17 TIER 2	40 REPLACED	70 TIER 3
6 TIER 1	18 TIER 3	41 TIER 3	
7 TIER 1	19 TIER 3	42 CONSOLIDATED	
8 TIER 2	23 TIER 3	43 TIER 3	
9 TIER 1	27 TIER 3	46 REPLACED	
10 TIER 1	29 TIER 3	47 TIER 3	
11 TIER 3	30 TIER 3	52 TIER 2	

# ROUTE 1 Vernor

Tier 2

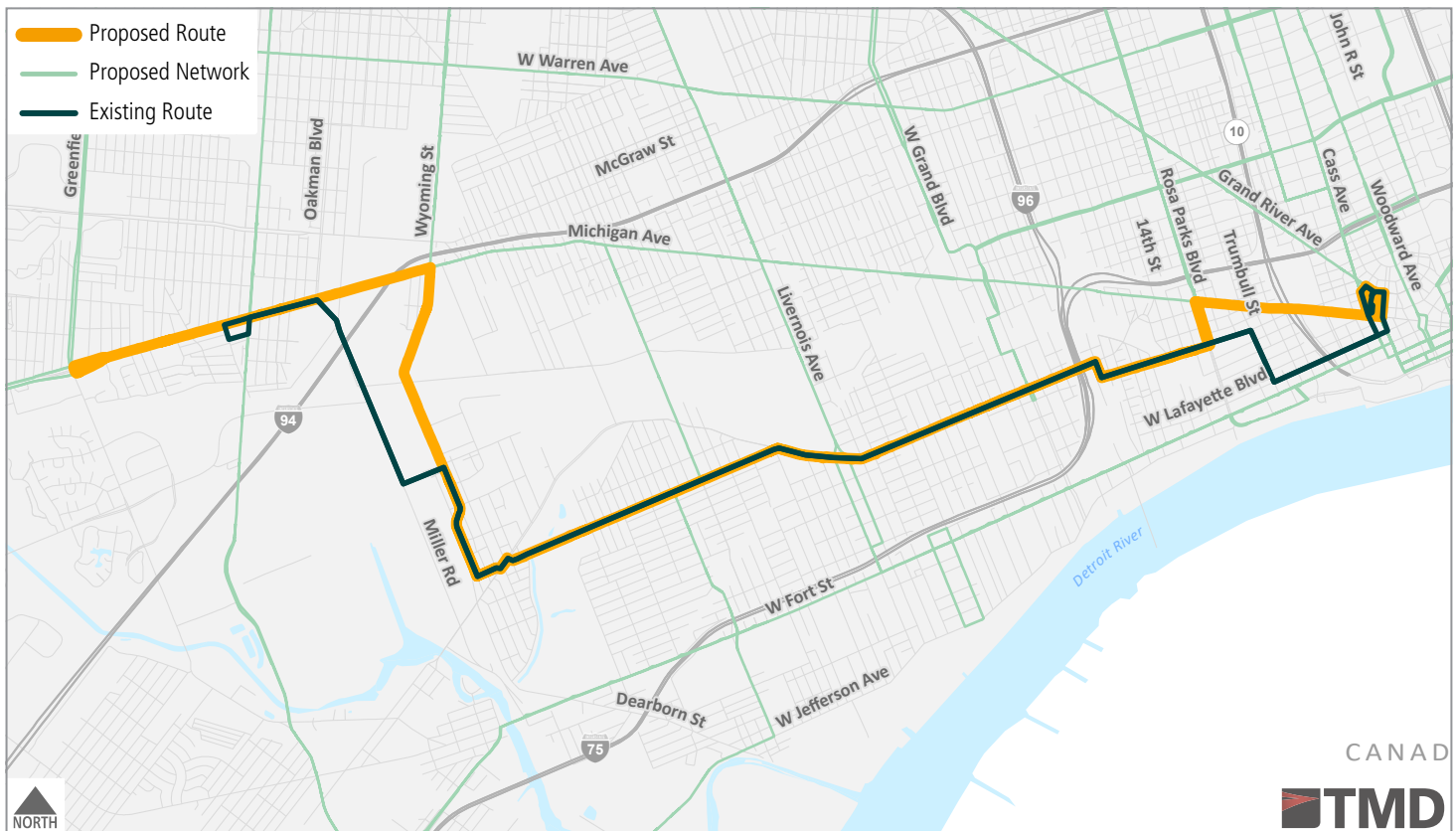
EXTENDED



## PROPOSED CHANGES

Route 1 will be extended to Greenfield Rd and Michigan Ave to improve westside network connections to Route 10 Greenfield and connect with more shopping opportunities. The route will be streamlined to operate via Wyoming St in Dearborn between Vernor Hwy and Michigan Ave. East of Rosa Parks Blvd, the route will operate via Michigan Ave to Rosa Parks Transit Center.

SCHEDULED SERVICE	EXISTING METRICS		PROPOSED	
	FREQUENCY (MIN)	SPAN	FREQUENCY (MIN)	SPAN
<b>Weekday</b>	30	4 a.m. - 1 a.m.	15	4 a.m. - 1 a.m.
<b>Saturday</b>	30	4 a.m. - 1 a.m.	30	4 a.m. - 1 a.m.
<b>Sunday</b>	60	4 a.m. - 12:45 a.m.	30	4 a.m. - 1 a.m.



# ROUTE 2 Michigan

## Tier 1

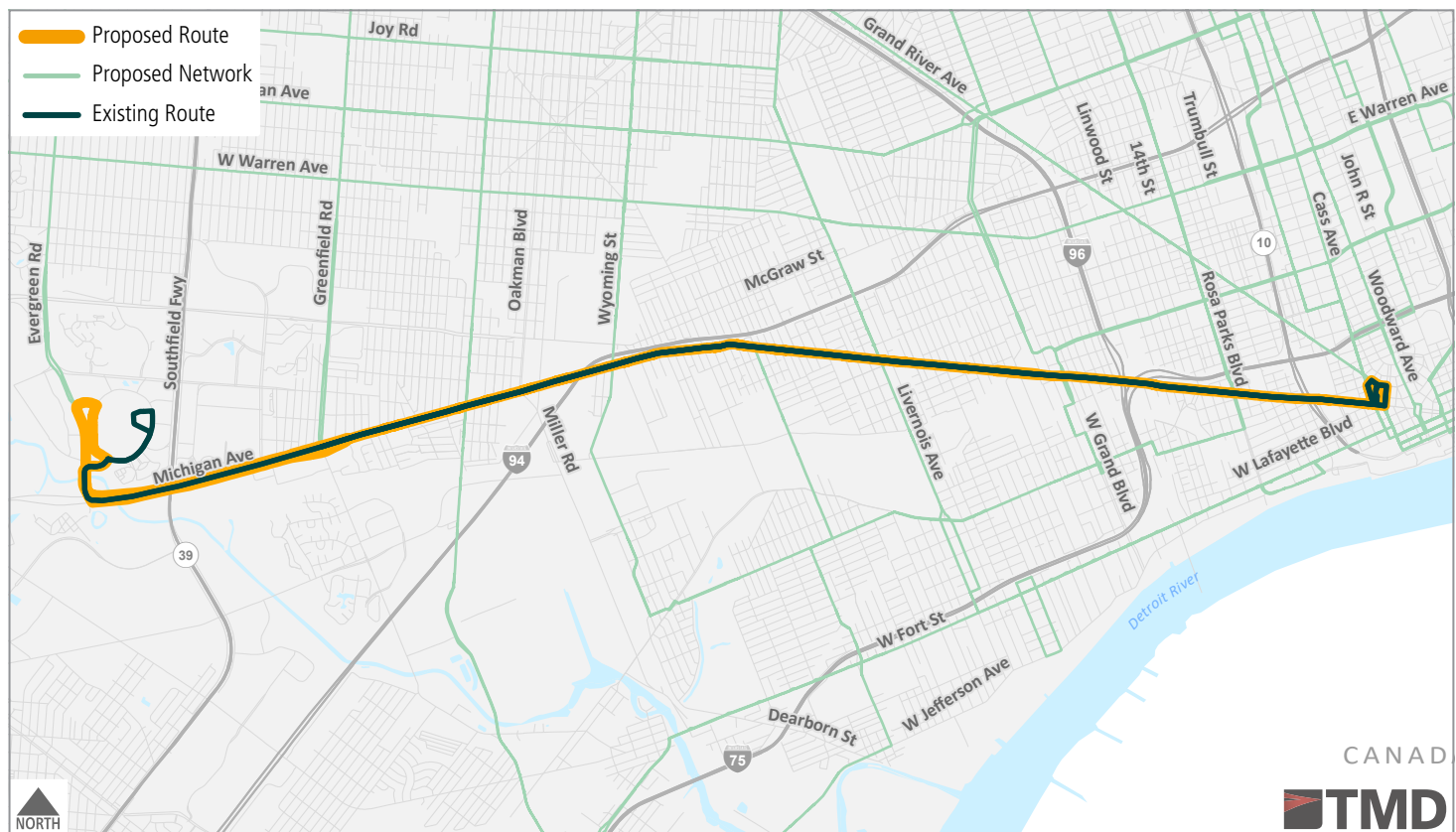
NO ALIGNMENT CHANGE



### PROPOSED CHANGES

Route 2 will maintain its current alignment between Rosa Parks Transit Center and Fairlane Town Center. A new transit hub is proposed for the west side of Fairlane Town Center, to provide a closer connection to Henry Ford Medical Center and U of M-Dearborn.

SCHEDULED SERVICE	EXISTING METRICS		PROPOSED	
	FREQUENCY (MIN)	SPAN	FREQUENCY (MIN)	SPAN
<b>Weekday</b>	30	4 a.m. - 12:30 a.m.	10	24 hours
<b>Saturday</b>	60	4 a.m. - 12:30 a.m.	15	24 hours
<b>Sunday</b>	60	4:30 a.m. - 1 a.m.	15	24 hours



# ROUTE 3 Grand River

## Tier 1

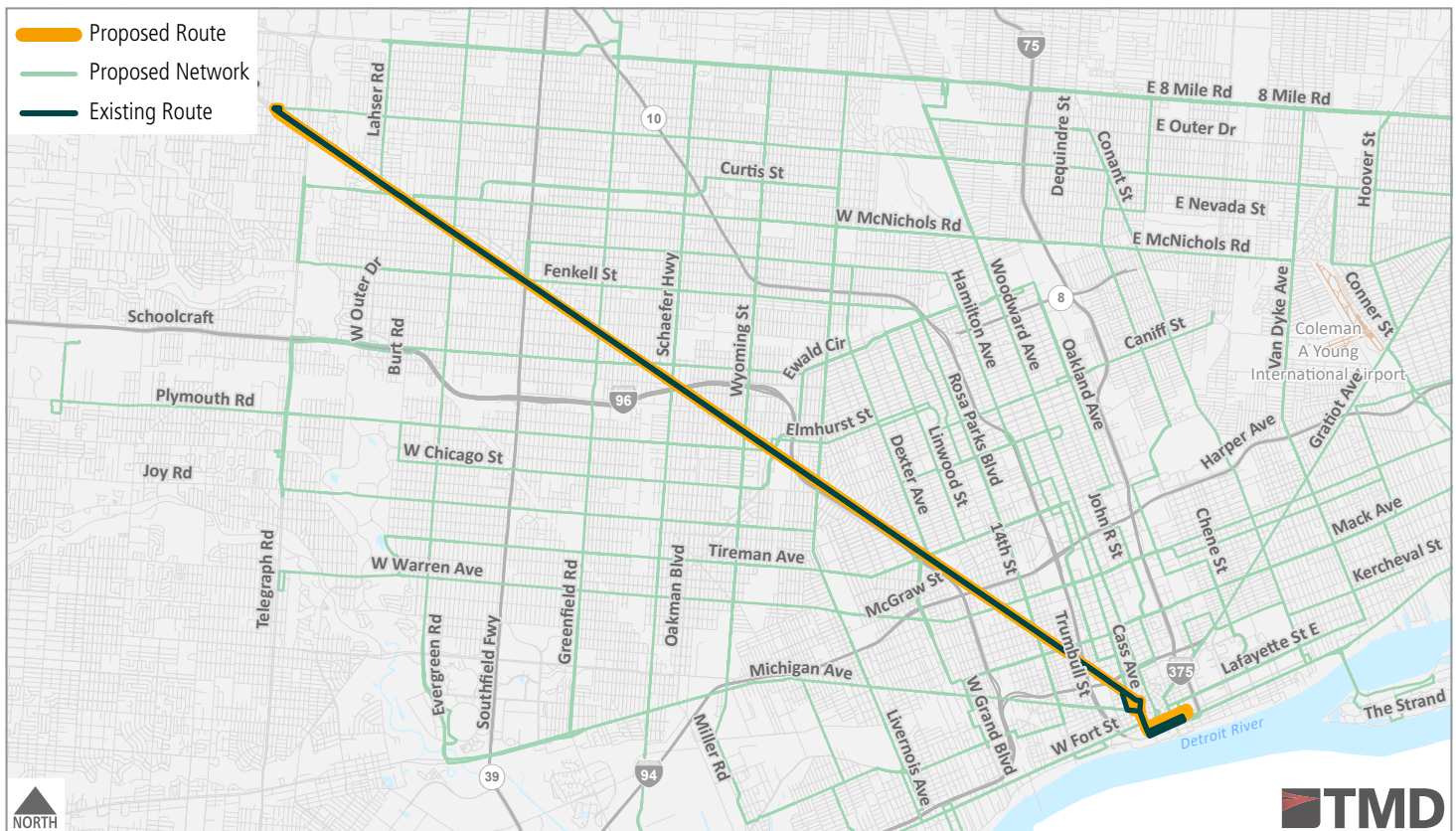
### ROUTING ADJUSTMENT



### PROPOSED CHANGES

Route 3 will continue to operate along its current alignment between Downtown and 7 Mile Rd. In Downtown, westbound buses will operate via W Congress St instead of E Jefferson Ave. Proposed for future enhanced BRT/Rapid service.

SCHEDULED SERVICE	EXISTING METRICS		PROPOSED	
	FREQUENCY (MIN)	SPAN	FREQUENCY (MIN)	SPAN
<b>Weekday</b>	20	24 Hours	10	24 hours
<b>Saturday</b>	30	24 Hours	15	24 hours
<b>Sunday</b>	30	24 Hours	15	24 hours



# ROUTE 4 Woodward

## Tier 1

### ROUTING ADJUSTMENT



### PROPOSED CHANGES

Route 4 will continue to operate along its current alignment between Downtown and the temporary State Fair Transit Center. Route 4 will be extended to serve the new State Fair Transit Center when it opens. In Downtown, buses will turn around at Larned St to remain on Woodward, and no longer turn via W Congress St and Griswold St. Proposed for future enhanced BRT/Rapid service.



SCHEDULED SERVICE	EXISTING METRICS	
	FREQUENCY (MIN)	SPAN
<b>Weekday</b>	15	24 Hours
<b>Saturday</b>	20	24 Hours
<b>Sunday</b>	20	24 Hours

SCHEDULED SERVICE	PROPOSED	
	FREQUENCY (MIN)	SPAN
<b>Weekday</b>	7.5	24 hours
<b>Saturday</b>	10	24 hours
<b>Sunday</b>	10	24 hours

# ROUTE 5 Van Dyke-Lafayette

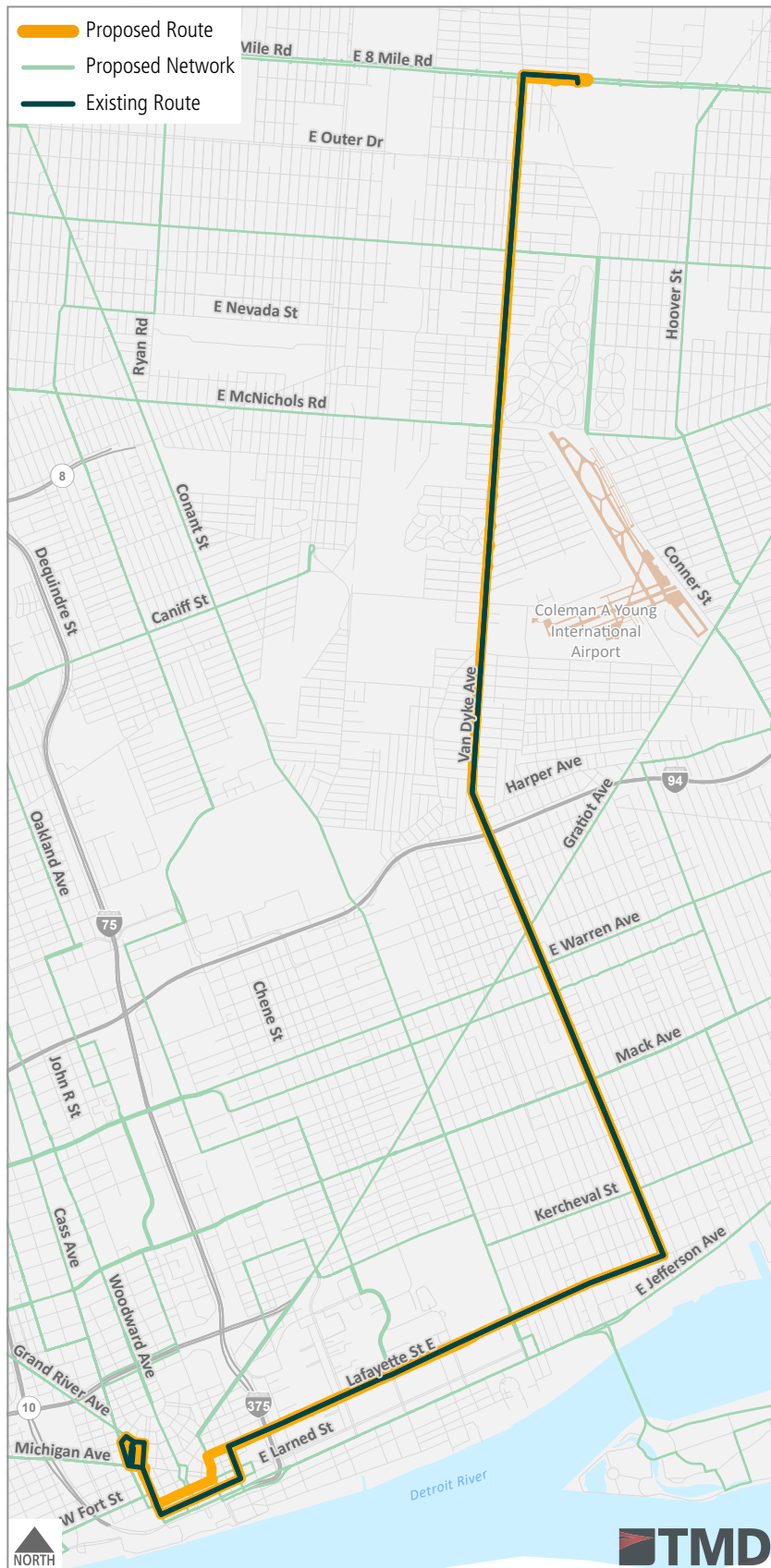
## Tier 2

### ROUTING ADJUSTMENT



### PROPOSED CHANGES

Route 5 will maintain its current alignment between Rosa Parks Transit Center and 8 Mile Rd at the Bel-Air Center.



SCHEDULED SERVICE	EXISTING METRICS	
	FREQUENCY (MIN)	SPAN
<b>Weekday</b>	30	24 Hours
<b>Saturday</b>	30	24 Hours
<b>Sunday</b>	60	24 Hours

SCHEDULED SERVICE	PROPOSED	
	FREQUENCY (MIN)	SPAN
<b>Weekday</b>	15	24 hours
<b>Saturday</b>	30	24 hours
<b>Sunday</b>	30	24 hours



# ROUTE 6 Gratiot

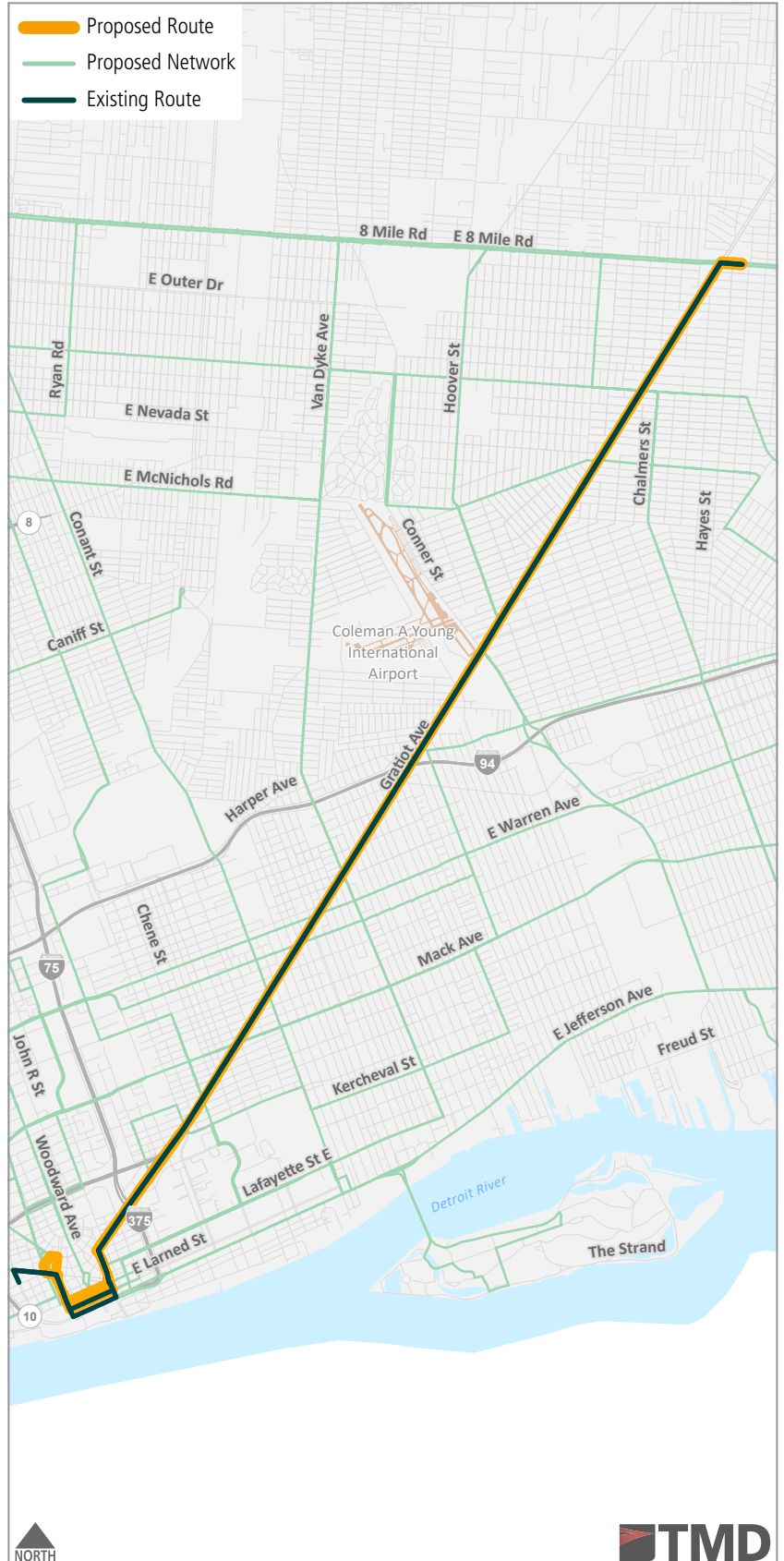
## Tier 1

### ROUTING ADJUSTMENT



### PROPOSED CHANGES

Route 6 will maintain its current alignment between Downtown and 8 Mile Rd. In Downtown, westbound buses will operate via W Congress St instead of E Jefferson Ave. Buses will terminate at Rosa Parks Transit Center instead of 3rd Ave/Michigan across from Police Headquarters. Proposed for future enhanced BRT/Rapid service.



SCHEDULED SERVICE	EXISTING METRICS	
	FREQUENCY (MIN)	SPAN
<b>Weekday</b>	15	24 Hours
<b>Saturday</b>	30	24 Hours
<b>Sunday</b>	30	24 Hours

SCHEDULED SERVICE	PROPOSED	
	FREQUENCY (MIN)	SPAN
<b>Weekday</b>	10	24 hours
<b>Saturday</b>	15	24 hours
<b>Sunday</b>	15	24 hours





# ROUTE 7 Seven Mile

## Tier 1

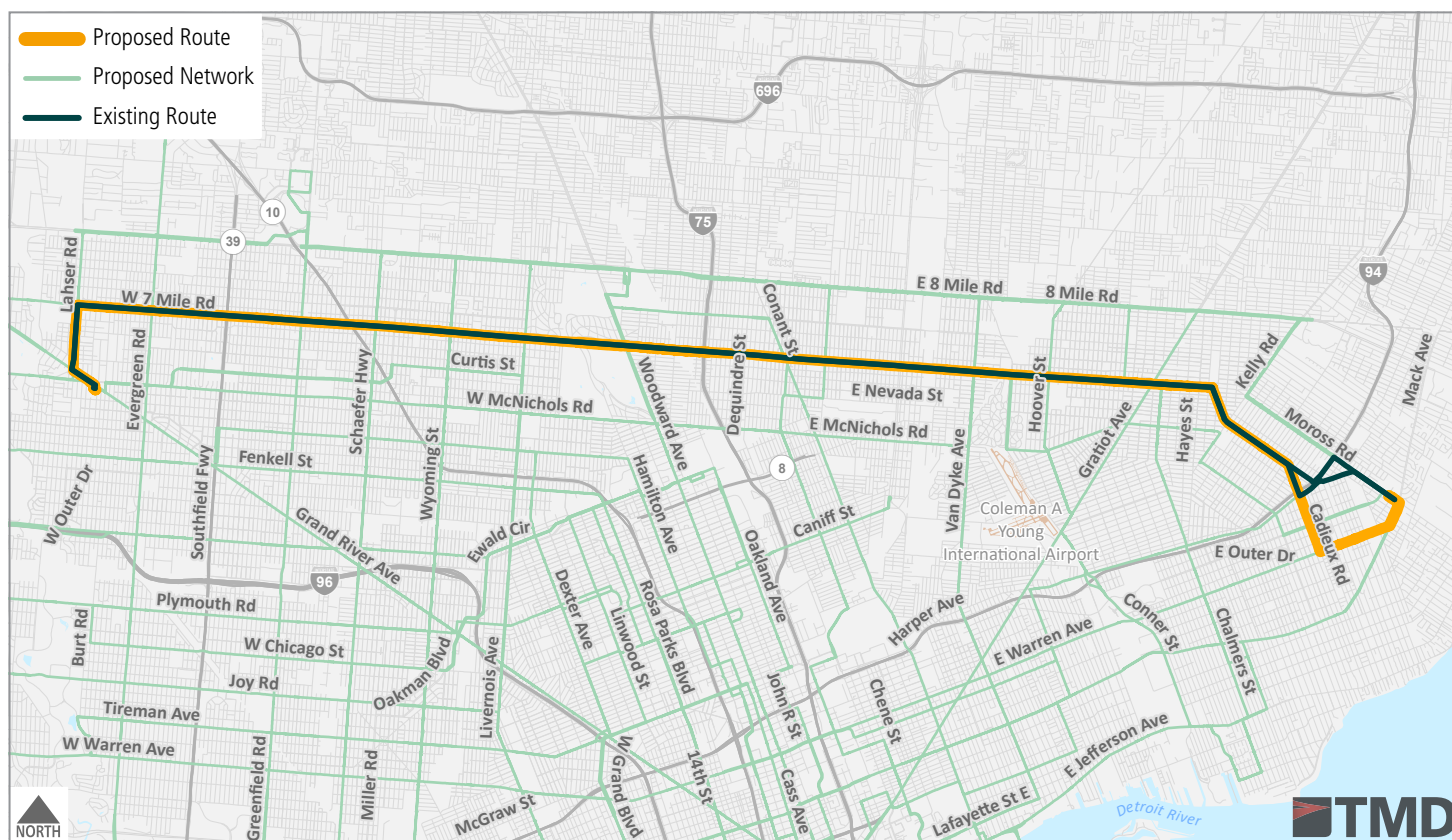
### ROUTING ADJUSTMENT



### PROPOSED CHANGES

Route 7 will continue to operate between the Old Redford Meijer (Grand River Ave/McNichols Rd) and Moross Rd/Mack Ave. On the east side, the route will operate via Cadieux Rd and Warren Ave instead of Chester St and Moross Rd to improve eastside network connections. Proposed for future enhanced BRT/ Rapid service.

SCHEDULED SERVICE	EXISTING METRICS		PROPOSED	
	FREQUENCY (MIN)	SPAN	FREQUENCY (MIN)	SPAN
<b>Weekday</b>	20	24 Hours	10	24 hours
<b>Saturday</b>	30	24 Hours	15	24 hours
<b>Sunday</b>	30	24 Hours	15	24 hours



# ROUTE 8 Warren

Tier 2

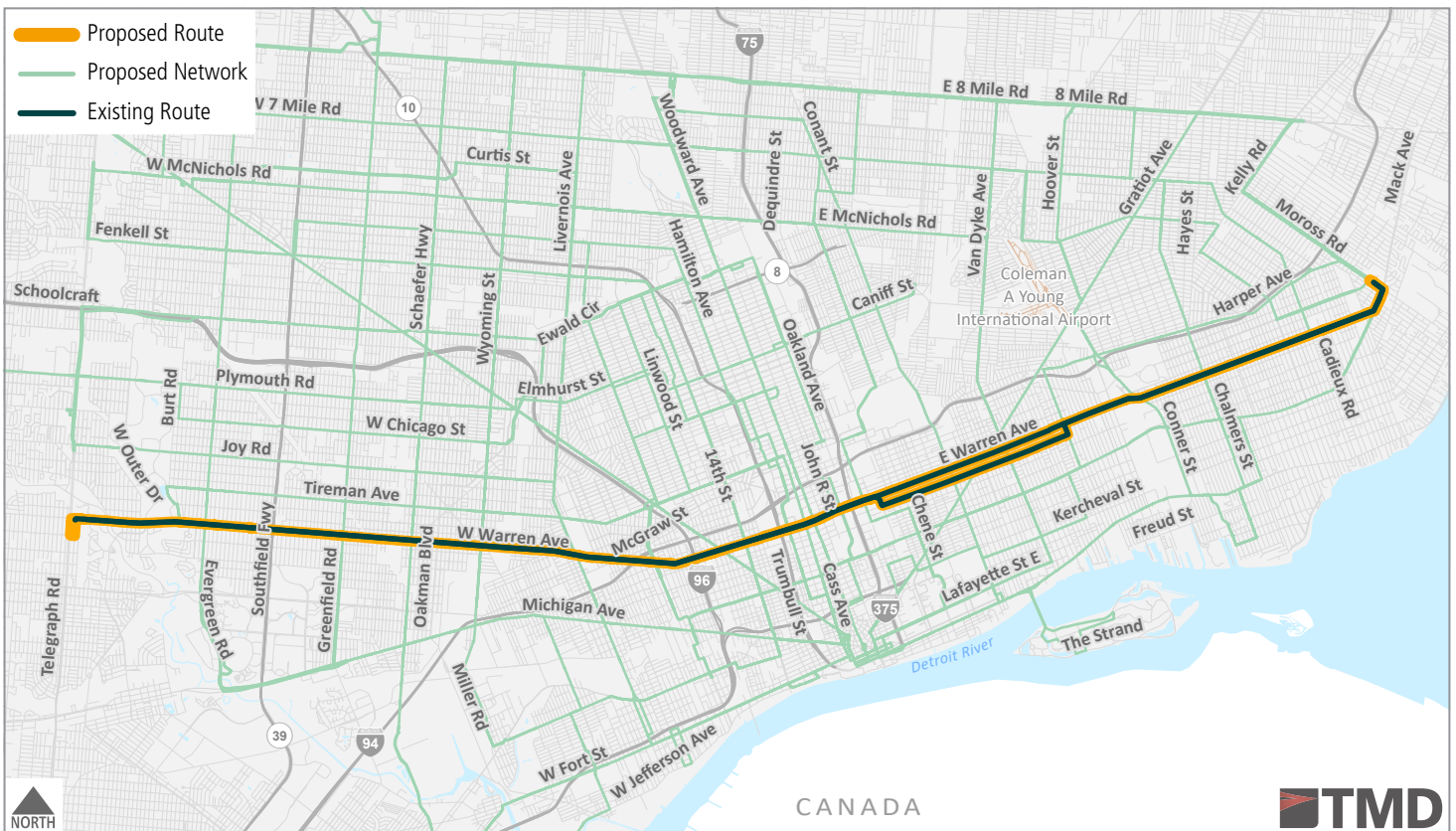
NO ALIGNMENT CHANGE



## PROPOSED CHANGES

Route 8 will continue to operate between Moross Rd/Mack Ave and Warren Ave at Telegraph Rd on the current alignment.

SCHEDULED SERVICE	EXISTING METRICS		PROPOSED	
	FREQUENCY (MIN)	SPAN	FREQUENCY (MIN)	SPAN
<b>Weekday</b>	30	24 Hours	15	24 hours
<b>Saturday</b>	45	24 Hours	30	24 hours
<b>Sunday</b>	60	24 Hours	30	24 hours



# ROUTE 9 Jefferson

## Tier 1

### ROUTING ADJUSTMENT



### PROPOSED CHANGES

Route 9 will continue to operate between Rosa Parks Transit Center and the east side via the current E Jefferson Ave. alignment. It will be extended north along Alter Rd to Mack Ave to improve eastside network connections and access to shopping. Proposed for future enhanced BRT/Rapid service.

DDOT will conduct a pilot test of route enhancements on Route 9 East Jefferson beginning with implementation of the proposed service frequencies in January 2024. DDOT will also introduce more bus shelters, new trip displays, and new temporary boarding islands at select stops later in 2024.

SCHEDULED SERVICE	EXISTING METRICS		PROPOSED	
	FREQUENCY (MIN)	SPAN	FREQUENCY (MIN)	SPAN
<b>Weekday</b>	10	4 a.m. - 1 a.m.	10	24 hours
<b>Saturday</b>	15	4:15 a.m. - 12:30 a.m.	15	24 hours
<b>Sunday</b>	15	4:15 a.m. - 12:30 a.m.	15	24 hours



# ROUTE 10 Greenfield

## Tier 1

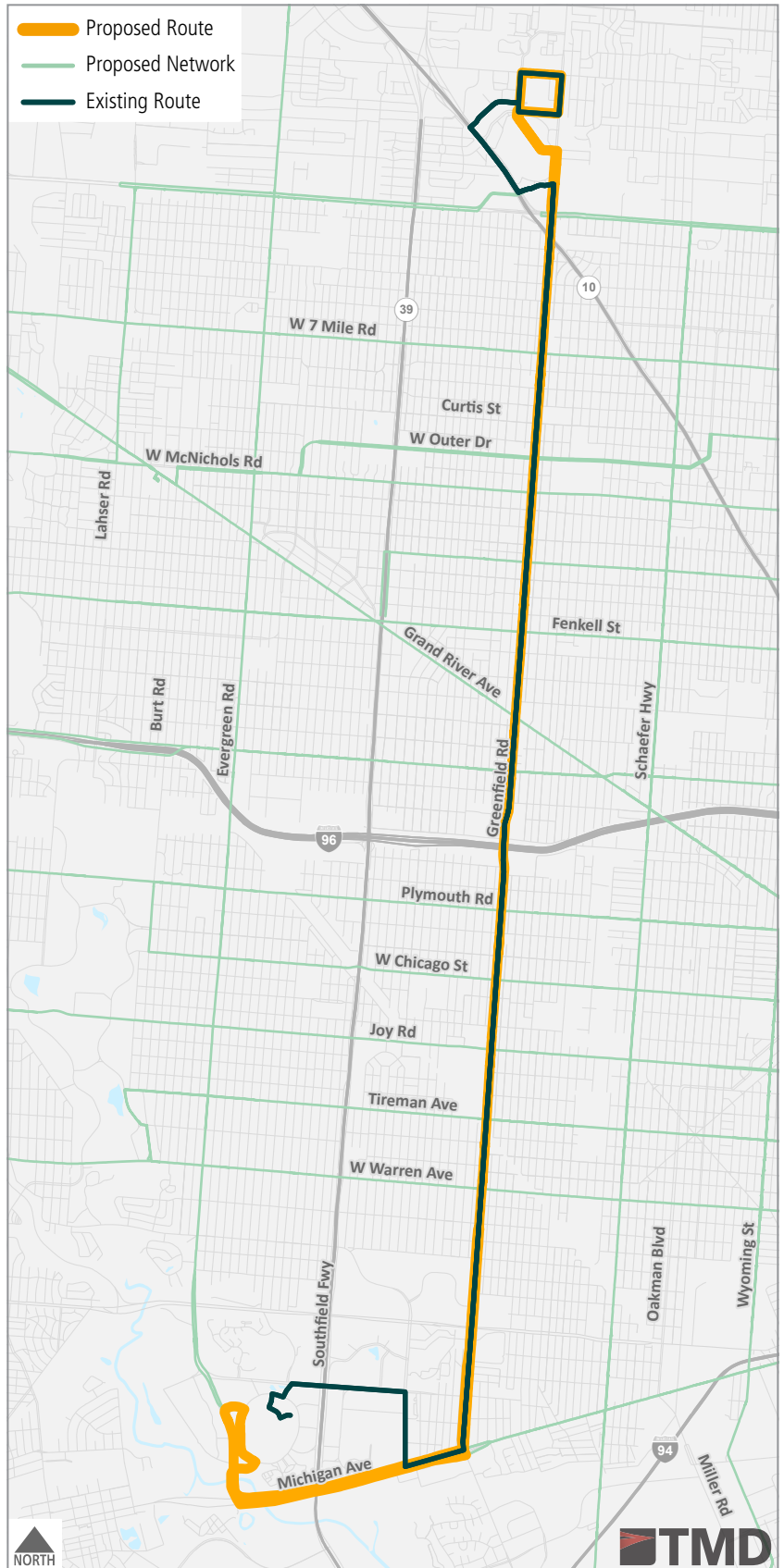
### ROUTING ADJUSTMENT



### PROPOSED CHANGES

Route 10 will continue to operate between Fairlane Town Center and 9 Mile Rd via Greenfield Rd. A new transit hub is proposed for the west side of Fairlane Town Center, to provide a closer connection to Henry Ford Medical Center and U of M-Dearborn. The routing to Fairlane has been streamlined to operate directly via Michigan Ave to the new hub.

At the north end, the route will operate via Greenfield Rd and through the Northland Center redevelopment before completing its final loop around the Ascension Providence Hospital and ending at 9 Mile Rd. The final alignment through the Northland Center will be determined as the redevelopment progresses. Proposed for future enhanced BRT/Rapid service.



SCHEDULED SERVICE	EXISTING METRICS	
	FREQUENCY (MIN)	SPAN
<b>Weekday</b>	20	24 Hours
<b>Saturday</b>	30	24 Hours
<b>Sunday</b>	30	24 Hours

SCHEDULED SERVICE	PROPOSED	
	FREQUENCY (MIN)	SPAN
<b>Weekday</b>	10	24 hours
<b>Saturday</b>	15	24 hours
<b>Sunday</b>	15	24 hours



# ROUTE 11 Clairmount-Grand

## Tier 3

### ROUTING ADJUSTMENT

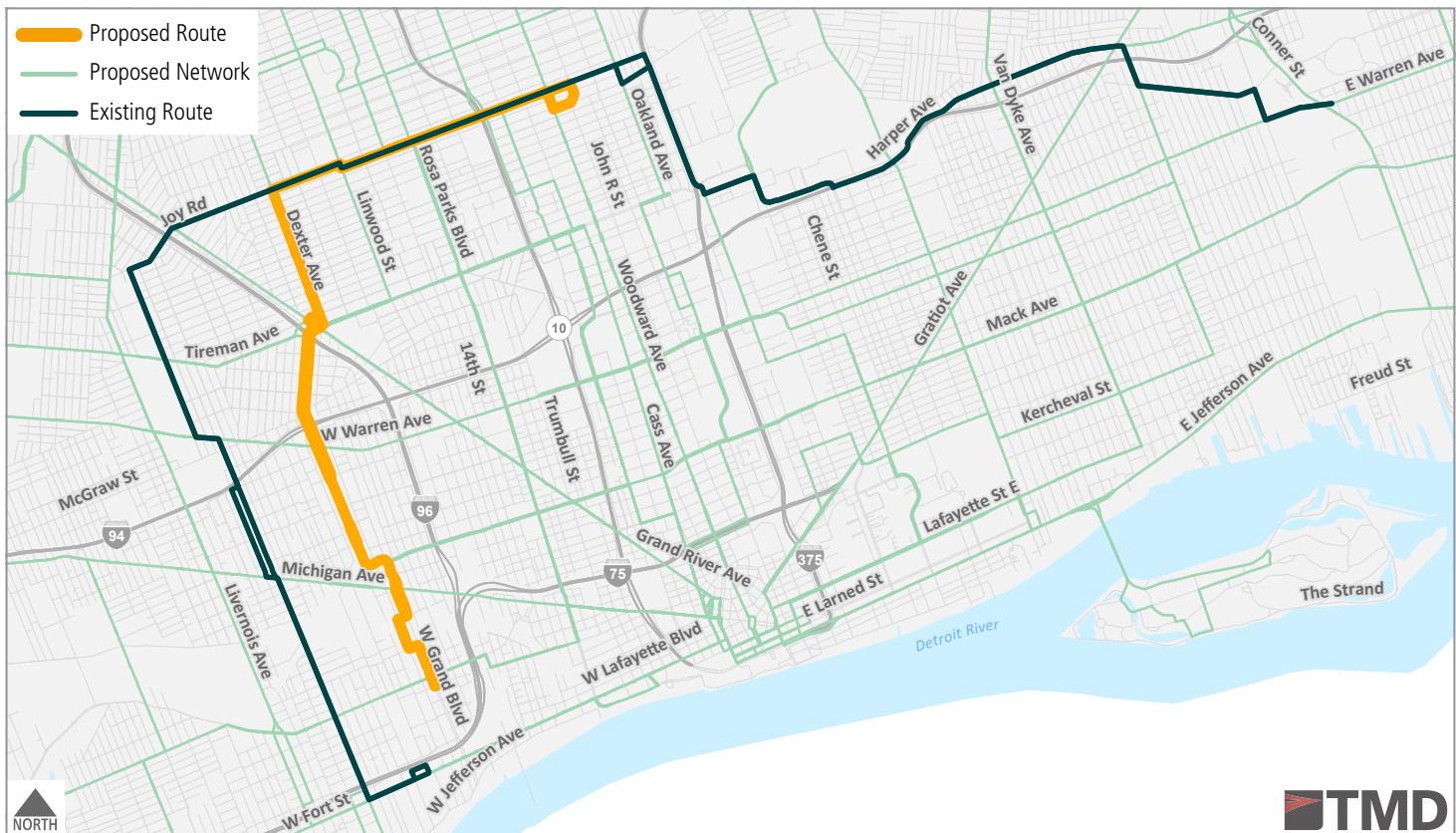


### PROPOSED CHANGES

Route 11 will be streamlined to improve network connections and now operate between Vernor Hwy/W Grand Blvd and Clairmount St/Woodward Ave via W Grand Blvd, Dexter Ave, Joy Rd, and Clairmount St. Westside riders of the former Route 11 can access 30 Livernois as an alternative and eastside riders can access Routes 5, 6, 8, 29, 38, 52, or 67.



SCHEDULED SERVICE	EXISTING METRICS		PROPOSED	
	FREQUENCY (MIN)	SPAN	FREQUENCY (MIN)	SPAN
<b>Weekday</b>	60	5 a.m. - 8:45 p.m.	30	4 a.m. - 1 a.m.
<b>Saturday</b>	--	--	30	4 a.m. - 1 a.m.
<b>Sunday</b>	--	--	30	4 a.m. - 1 a.m.



# ROUTE 12 Conant

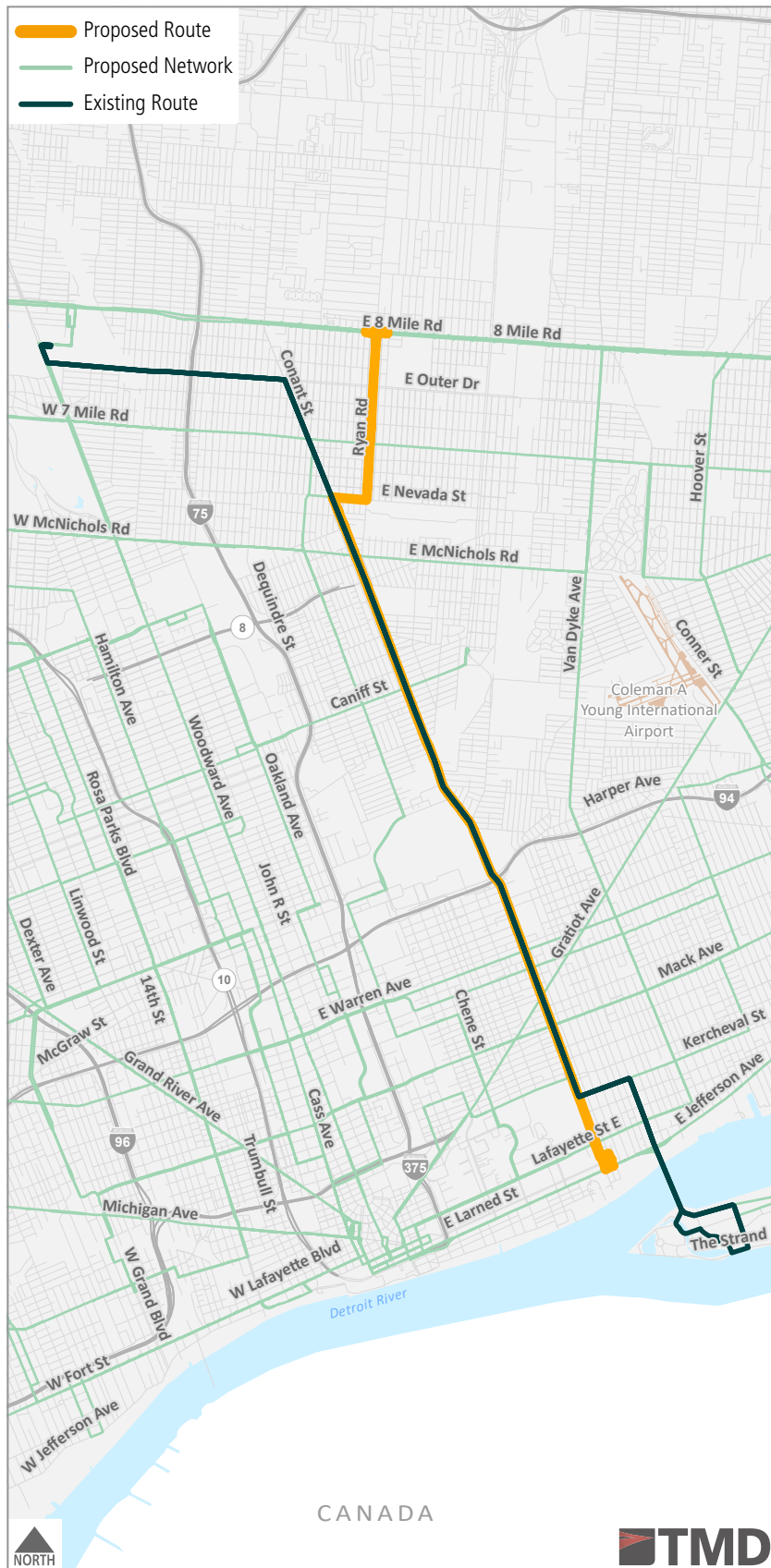
## Tier 3

### ROUTING ADJUSTMENT



### PROPOSED CHANGES

Route 12 will operate between E Jefferson Ave and 8 Mile Rd via Mt Elliott St, Conant St, E Nevada St, and Ryan Rd. Customers traveling to Belle Isle can ride the Route 70 shuttle as an alternative. Customers north of Nevada St/Conant St can ride the new Route 52 as an alternative for service to and from State Fair Transit Center and Meijer.



SCHEDULED SERVICE	EXISTING METRICS	
	FREQUENCY (MIN)	SPAN
<b>Weekday</b>	60	7:30 a.m. - 8 p.m.
<b>Saturday</b>	60	7:30 a.m. - 8 p.m.
<b>Sunday</b>	60	8 a.m. - 6:30 p.m.

SCHEDULED SERVICE	PROPOSED	
	FREQUENCY (MIN)	SPAN
<b>Weekday</b>	30	4 a.m. - 1 a.m.
<b>Saturday</b>	30	4 a.m. - 1 a.m.
<b>Sunday</b>	30	4 a.m. - 1 a.m.



CANADA



# ROUTE 13 Conner

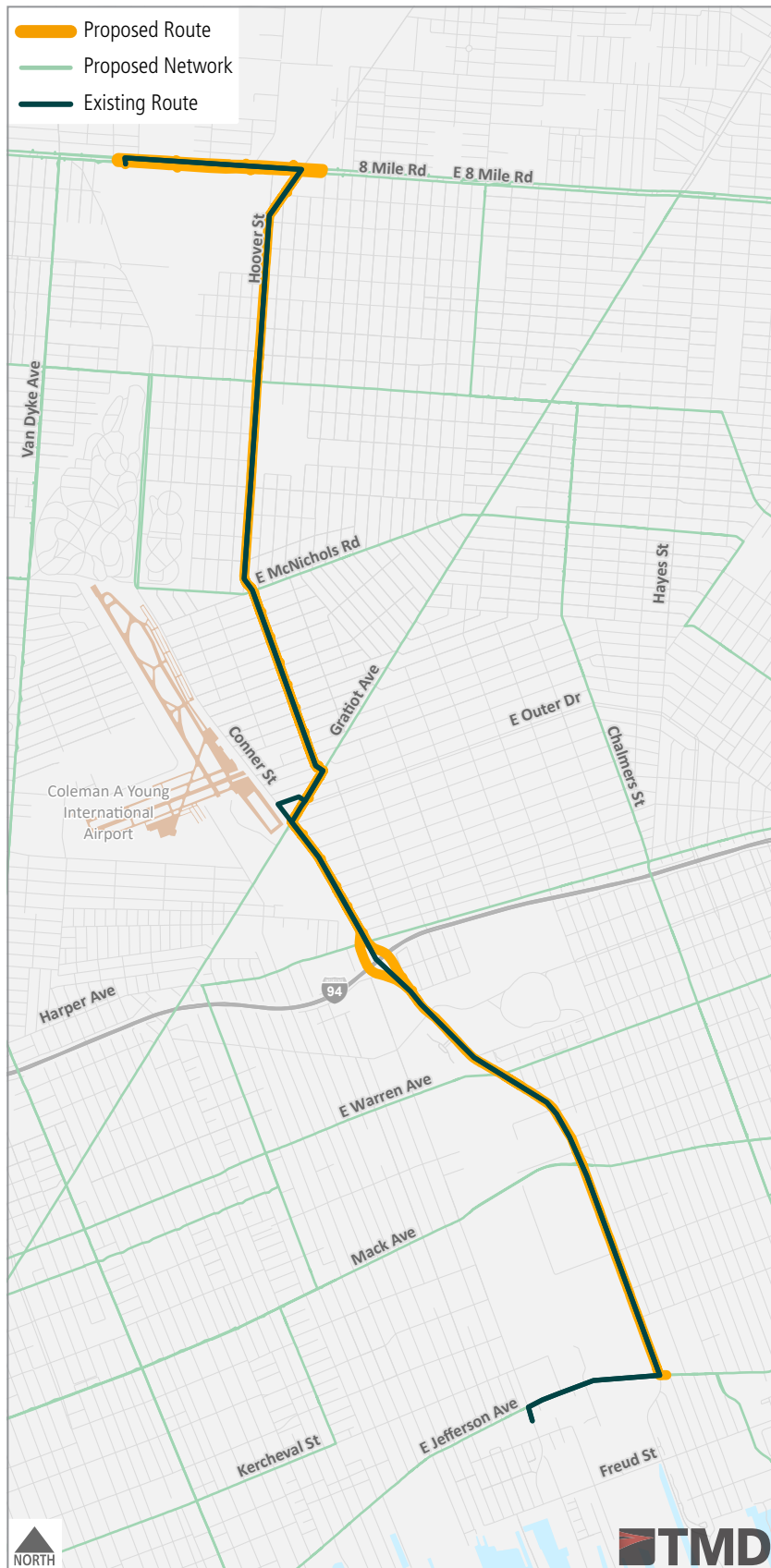
## Tier 3

### ROUTING ADJUSTMENT



### PROPOSED CHANGES

Route 13 will continue to operate between 8 Mile Rd and E Jefferson Ave on its current alignment. At the south end, Route 13 will terminate at Conner St/E Jefferson Ave to allow for connection with a streamlined Route 68 Chalmers.



SCHEDULED SERVICE	EXISTING METRICS	
	FREQUENCY (MIN)	SPAN
<b>Weekday</b>	60	5:30 a.m. - 9 p.m.
<b>Saturday</b>	60	5:30 a.m. - 9 p.m.
<b>Sunday</b>	60	7 a.m. - 7:15 p.m.

SCHEDULED SERVICE	PROPOSED	
	FREQUENCY (MIN)	SPAN
<b>Weekday</b>	30	4 a.m. - 1 a.m.
<b>Saturday</b>	30	4 a.m. - 1 a.m.
<b>Sunday</b>	30	4 a.m. - 1 a.m.

# ROUTE 15 Chicago-Davison

## Tier 3

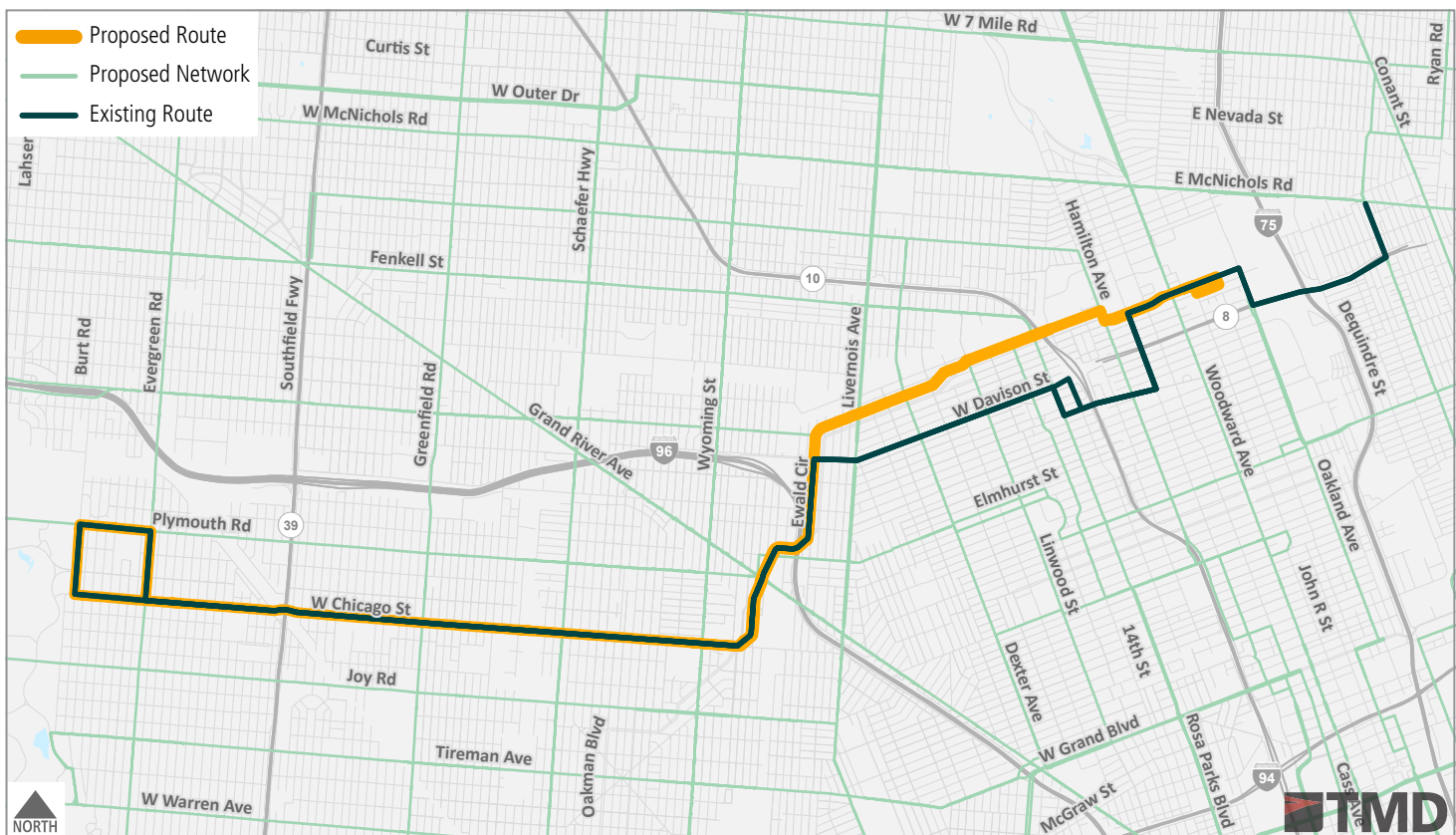
### ROUTING ADJUSTMENT



### PROPOSED CHANGES

Route 15 will be streamlined to operate between Plymouth Rd/Burt Rd and Woodward Ave/Manchester St via Chicago St, Oakman Blvd, Ewald Cir, and Oakman Blvd. Between Ewald Cir/Schoolcraft St and Manchester/Woodward, Route 15 will share an alignment with Route 43 Schoolcraft. This will allow for a combined frequency for riders traveling along this corridor. Customers riding the Davison St segment recommended for discontinuation will have access to crosstown service with Route 15 or 43 on Ewald Circle or Route 38 Plymouth on Elmhurst St. Direct Downtown service will be available with Routes 16, 18, 23, 29, or 52.

SCHEDULED SERVICE	EXISTING METRICS		PROPOSED	
	FREQUENCY (MIN)	SPAN	FREQUENCY (MIN)	SPAN
<b>Weekday</b>	60	6 a.m. - 10 p.m.	30	4 a.m. - 1 a.m.
<b>Saturday</b>	60	7 a.m. - 8:45 p.m.	30	4 a.m. - 1 a.m.
<b>Sunday</b>	60	7 a.m. - 7:45 p.m.	30	4 a.m. - 1 a.m.





# ROUTE 16 Dexter

## Tier 2

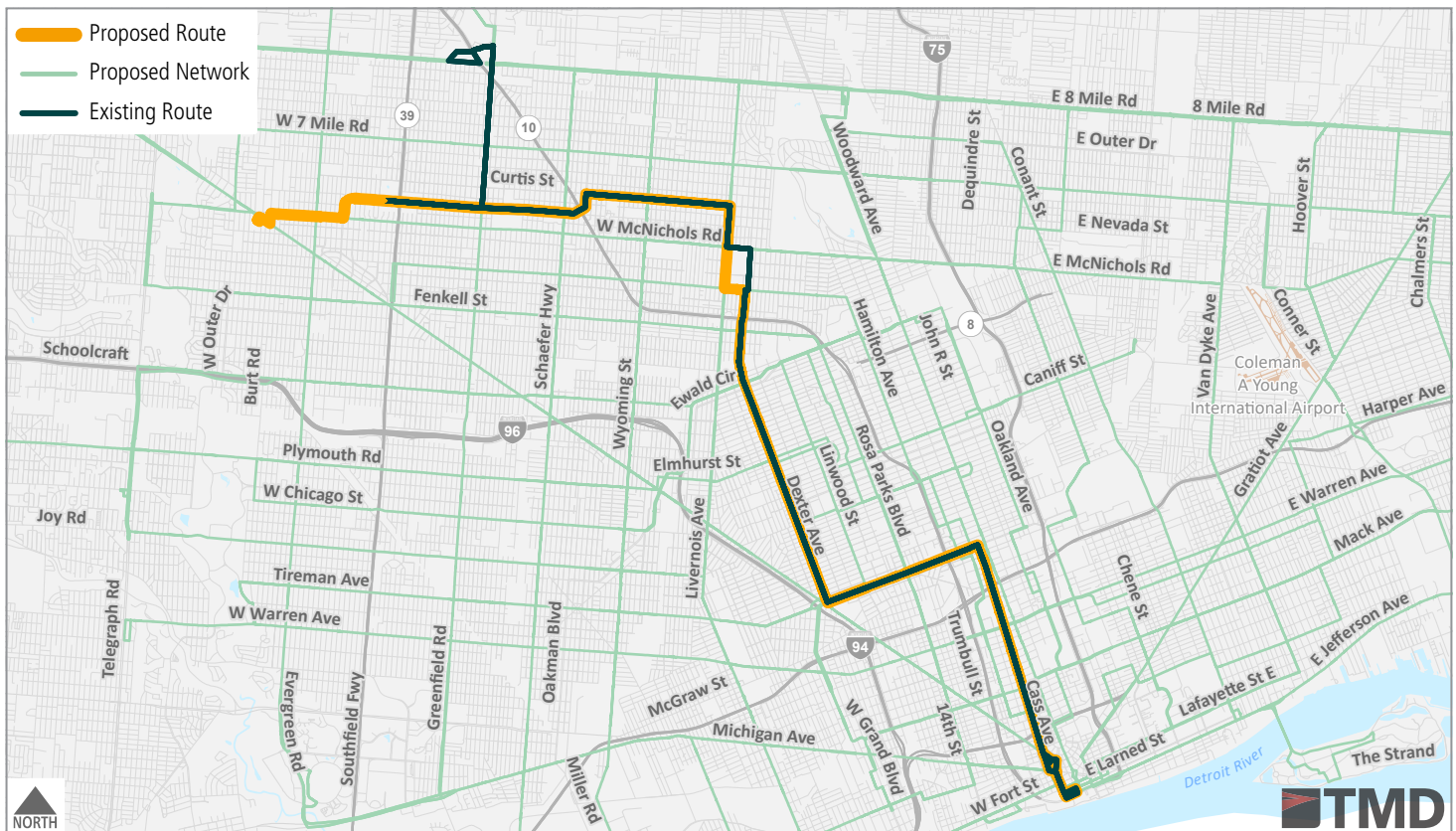
### EXTENDED



### PROPOSED CHANGES

Route 16 will now operate between Downtown and Old Redford Meijer (Grand River Ave/McNichols Rd) at all times. The route will follow its current alignment between Downtown and W Outer Dr/Greenfield Rd, except for a slight route change to operate on Livernois Ave between Puritan St and McNichols Rd (rather than Fairfield Ave) to better serve the University of Detroit Mercy campus. Buses will then continue on W Outer Drive, past Wayne County Community College to McNichols Rd and terminate at the Meijer hub. Riders can transfer to a 10 Greenfield bus for service on the former northern branch.

SCHEDULED SERVICE	EXISTING METRICS		PROPOSED	
	FREQUENCY (MIN)	SPAN	FREQUENCY (MIN)	SPAN
<b>Weekday</b>	20	24 Hours	15	24 hours
<b>Saturday</b>	30	24 Hours	15	24 hours
<b>Sunday</b>	30	24 Hours	15	24 hours



# ROUTE 17 Eight Mile

Tier 2

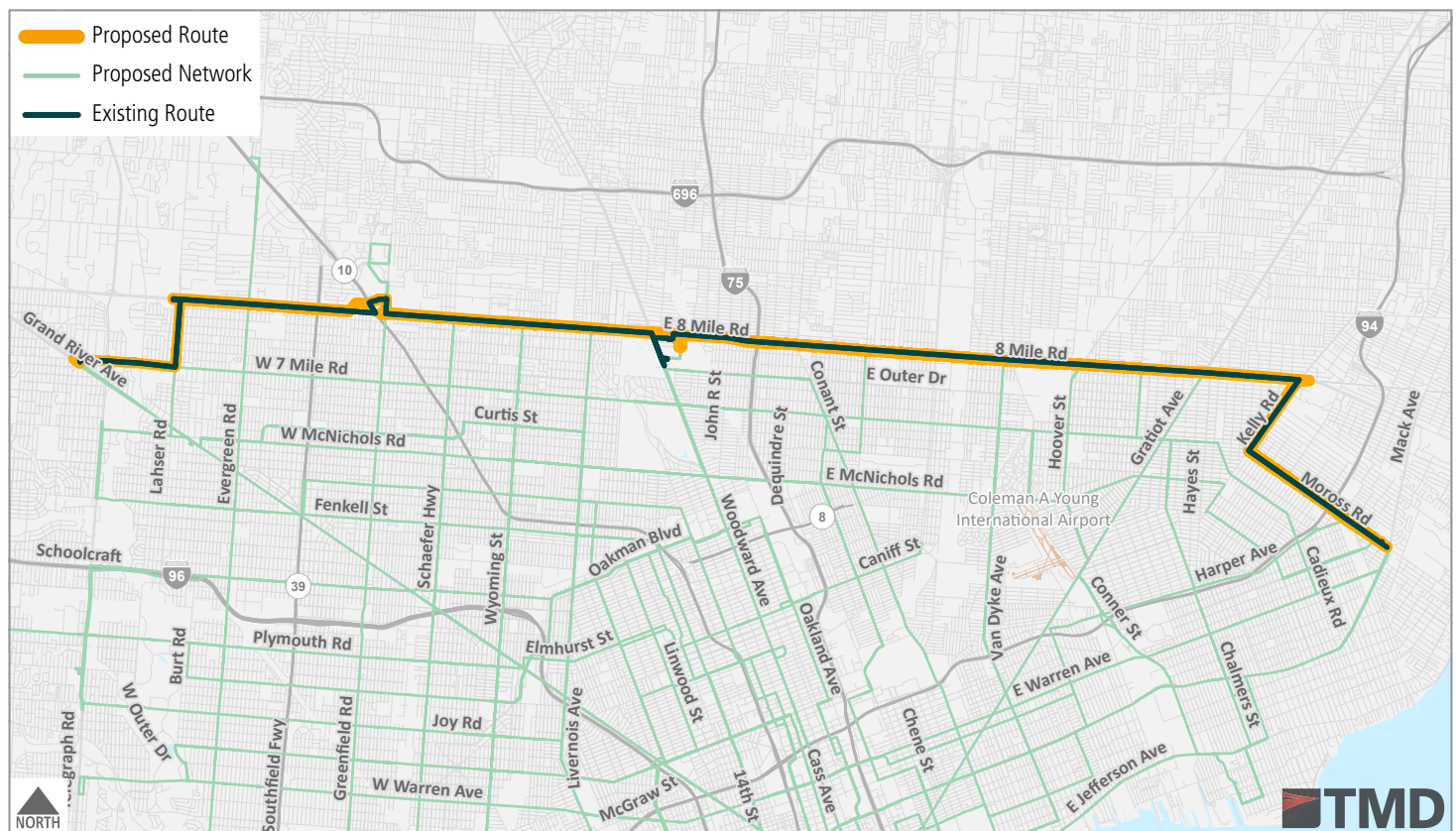
NO ALIGNMENT CHANGE



## PROPOSED CHANGES

Route 17 will continue to operate between Moross Rd/Mack Ave and 7 Mile Rd/Grand River Ave via the current alignment. Route 17 will shift to the new State Fair Transit Center when it opens in 2024.

SCHEDULED SERVICE	EXISTING METRICS		PROPOSED	
	FREQUENCY (MIN)	SPAN	FREQUENCY (MIN)	SPAN
<b>Weekday</b>	30	24 Hours	15	24 hours
<b>Saturday</b>	30	24 Hours	15	24 hours
<b>Sunday</b>	30	24 Hours	15	24 hours



# ROUTE 18 Fenkell

## Tier 3

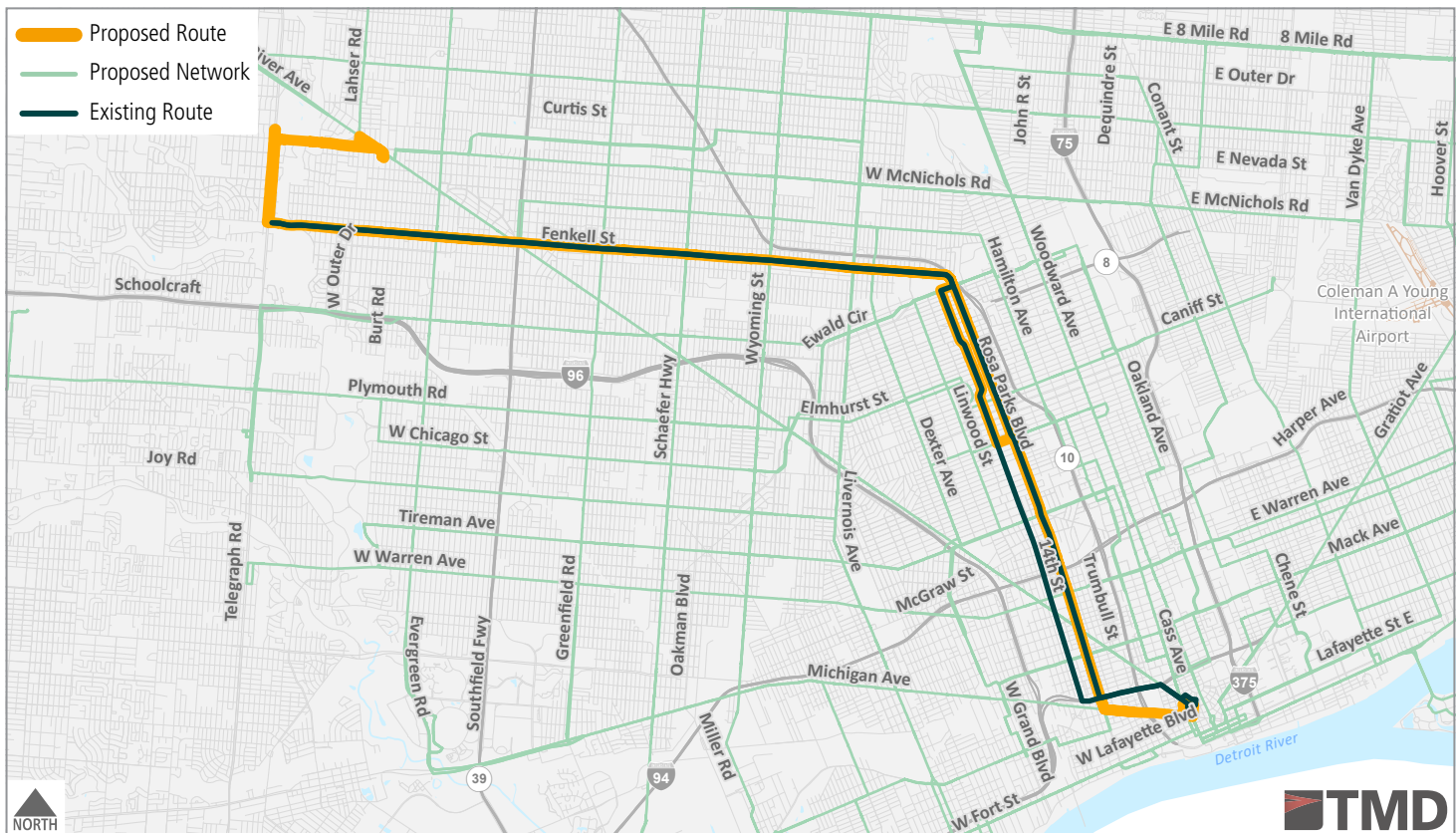
### ROUTING ADJUSTMENT/EXTENDED



### PROPOSED CHANGES

Route 18 will continue to operate between Rosa Parks Transit Center and northwest Detroit. Buses are proposed to operate on Michigan Ave in Downtown and Corktown, and bidirectionally on Rosa Parks Blvd after completion of the City's streetscape project. At the outer end, buses will continue north on Telegraph Rd from Fenkell St and then turn east on W McNichols Rd to end at the Old Redford Meijer Transit Hub. This will create new DDOT and SMART connections and access to shopping, and preserve coverage on McNichols west of Lahser Rd.

SCHEDULED SERVICE	EXISTING METRICS		PROPOSED	
	FREQUENCY (MIN)	SPAN	FREQUENCY (MIN)	SPAN
<b>Weekday</b>	45	5 a.m. - 11 p.m.	30	4 a.m. - 1 a.m.
<b>Saturday</b>	45	6 a.m. - 11 p.m.	30	4 a.m. - 1 a.m.
<b>Sunday</b>	60	8 a.m. - 8:45 p.m.	30	4 a.m. - 1 a.m.



# ROUTE 19 Fort

Tier 3

EXTENDED



## PROPOSED CHANGES

Route 19 will be extended south on Fort St and west on Southfield Rd to Dix Hwy for new connections to shopping and jobs in Lincoln Park. In Detroit, the route will follow its same alignment on Fort St to Rosa Parks Transit Center.

SCHEDULED SERVICE	EXISTING METRICS		PROPOSED	
	FREQUENCY (MIN)	SPAN	FREQUENCY (MIN)	SPAN
<b>Weekday</b>	60	5 a.m. - 12:30 a.m.	30	4 a.m. - 1 a.m.
<b>Saturday</b>	60	5 a.m. - 12:30 a.m.	30	4 a.m. - 1 a.m.
<b>Sunday</b>	60	5 a.m. - 11:30 p.m.	30	4 a.m. - 1 a.m.



# ROUTE 23 Hamilton - Puritan

Tier 3

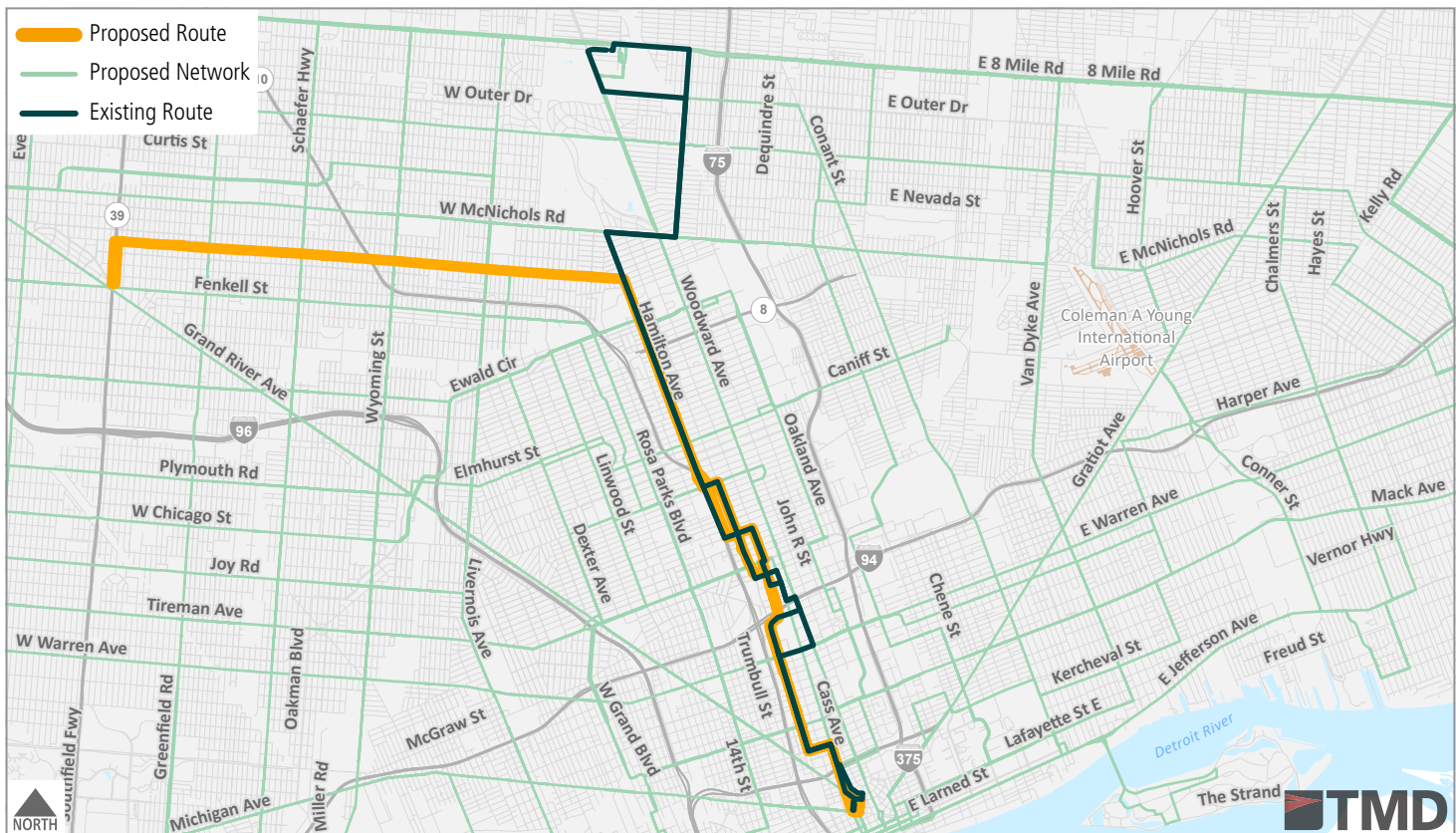
CONSOLIDATED



## PROPOSED CHANGES

Route 23 Hamilton and Route 39 Puritan will be combined to create a new one-seat ride between the westside and Downtown Detroit. Route 39 riders will no longer need to transfer to 4 Woodward for service to New Center, Midtown, or Downtown. Current Route 23 riders north of Puritan St will still have access to State Fair Transit Center or Downtown Detroit on Route 4 Woodward or the new 52 Chene.

SCHEDULED SERVICE	EXISTING METRICS		PROPOSED	
	FREQUENCY (MIN)	SPAN	FREQUENCY (MIN)	SPAN
<b>Weekday</b>	60	6 a.m.- 10 p.m.	30	4 a.m. - 1 a.m.
<b>Saturday</b>	60	7 a.m. - 10 p.m.	30	4 a.m. - 1 a.m.
<b>Sunday</b>	60	7 a.m. - 8:45 p.m.	30	4 a.m. - 1 a.m.



# ROUTE 27 Joy

## Tier 3

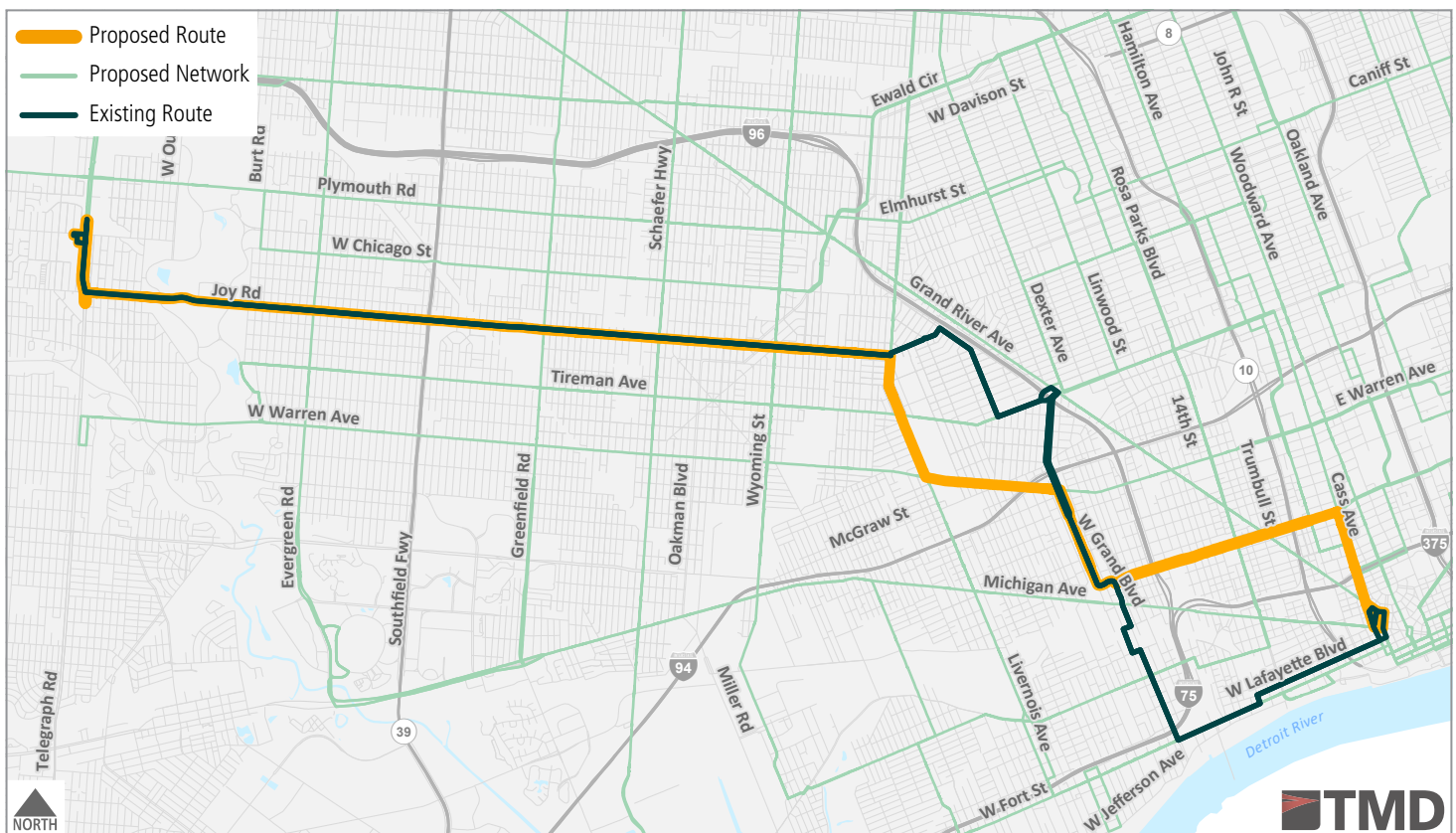
### ROUTING ADJUSTMENT



### PROPOSED CHANGES

Route 27 will continue to operate between Redford Plaza (Telegraph Rd) and Rosa Parks Transit Center. Between Joy Rd/Livernois Ave and downtown, the route will be streamlined to operate via Livernois Ave, Warren Ave, Grand Blvd, MLK Jr. Blvd, and Cass Ave. Customers between Livernois Ave and Grand River Ave can still ride Route 27, or access Route 3 Grand River or Route 47 Tireman as an alternative. South of Tireman Ave, customers can use 1 Vernor, 11 Clairmount, or 19 Fort as an alternative.

SCHEDULED SERVICE	EXISTING METRICS		PROPOSED	
	FREQUENCY (MIN)	SPAN	FREQUENCY (MIN)	SPAN
<b>Weekday</b>	60	5:30 a.m. - 10:30 p.m.	30	4 a.m. - 1 a.m.
<b>Saturday</b>	60	7 a.m. - 10 p.m.	30	4 a.m. - 1 a.m.
<b>Sunday</b>	60	7 a.m. - 7:45 p.m.	30	4 a.m. - 1 a.m.



# ROUTE 29 Linwood-Mid-City

## Tier 3

### CONSOLIDATED



### PROPOSED CHANGES

Route 29 will be combined with Route 42 Mid-City Loop for an improved bidirectional Midtown circulator route that also connects with Downtown and Rosa Parks Transit Center. The western portion of the loop will follow the current Route 29 alignment on Linwood Ave between Oakman Blvd and W Grand Blvd. It will then operate via Rosa Parks Blvd between Grand Blvd and Michigan Ave. The route will continue on Michigan Ave to Cass Ave, past Rosa Parks Transit Center, and use the Fisher Fwy service road to connect with Brush St. It will then resume the eastern alignment of the Mid-City Loop at Mack Ave/St. Antoine St, and continue to end at Woodward Ave/Manchester Pkwy. Riders of the northern segment of the current Route 29 can access Routes 16, 18, or 23 as an alternative for downtown service. Riders of the current route's segment on Trumbull St south of Grand Blvd can access Route 18 as an alternative.



SCHEDULED SERVICE	EXISTING METRICS	
	FREQUENCY (MIN)	SPAN
<b>Weekday</b>	60	6:45 a.m. - 9:30 p.m.
<b>Saturday</b>	60	6:45 a.m. - 9:30 p.m.
<b>Sunday</b>	60	7 a.m. - 7:30 p.m.

SCHEDULED SERVICE	PROPOSED	
	FREQUENCY (MIN)	SPAN
<b>Weekday</b>	30	4 a.m. - 1 a.m.
<b>Saturday</b>	30	4 a.m. - 1 a.m.
<b>Sunday</b>	30	4 a.m. - 1 a.m.

# ROUTE 30 Livernois

## Tier 3

### ROUTING ADJUSTMENT



### PROPOSED CHANGES

Route 30 will continue to operate between State Fair Transit Center and Southwest Detroit via Livernois Avenue. At the south end, the route will be streamlined to terminate at Fort St/ Junction St to provide a connection to the CHASS Center.



SCHEDULED SERVICE	EXISTING METRICS	
	FREQUENCY (MIN)	SPAN
<b>Weekday</b>	60	6 a.m. - 9:45 p.m.
<b>Saturday</b>	60	7 a.m. - 9:45 p.m.
<b>Sunday</b>	60	7 a.m. - 7:45 p.m.

SCHEDULED SERVICE	PROPOSED	
	FREQUENCY (MIN)	SPAN
<b>Weekday</b>	30	4 a.m. - 1 a.m.
<b>Saturday</b>	30	4 a.m. - 1 a.m.
<b>Sunday</b>	30	4 a.m. - 1 a.m.





# ROUTE 31 Mack

## Tier 2

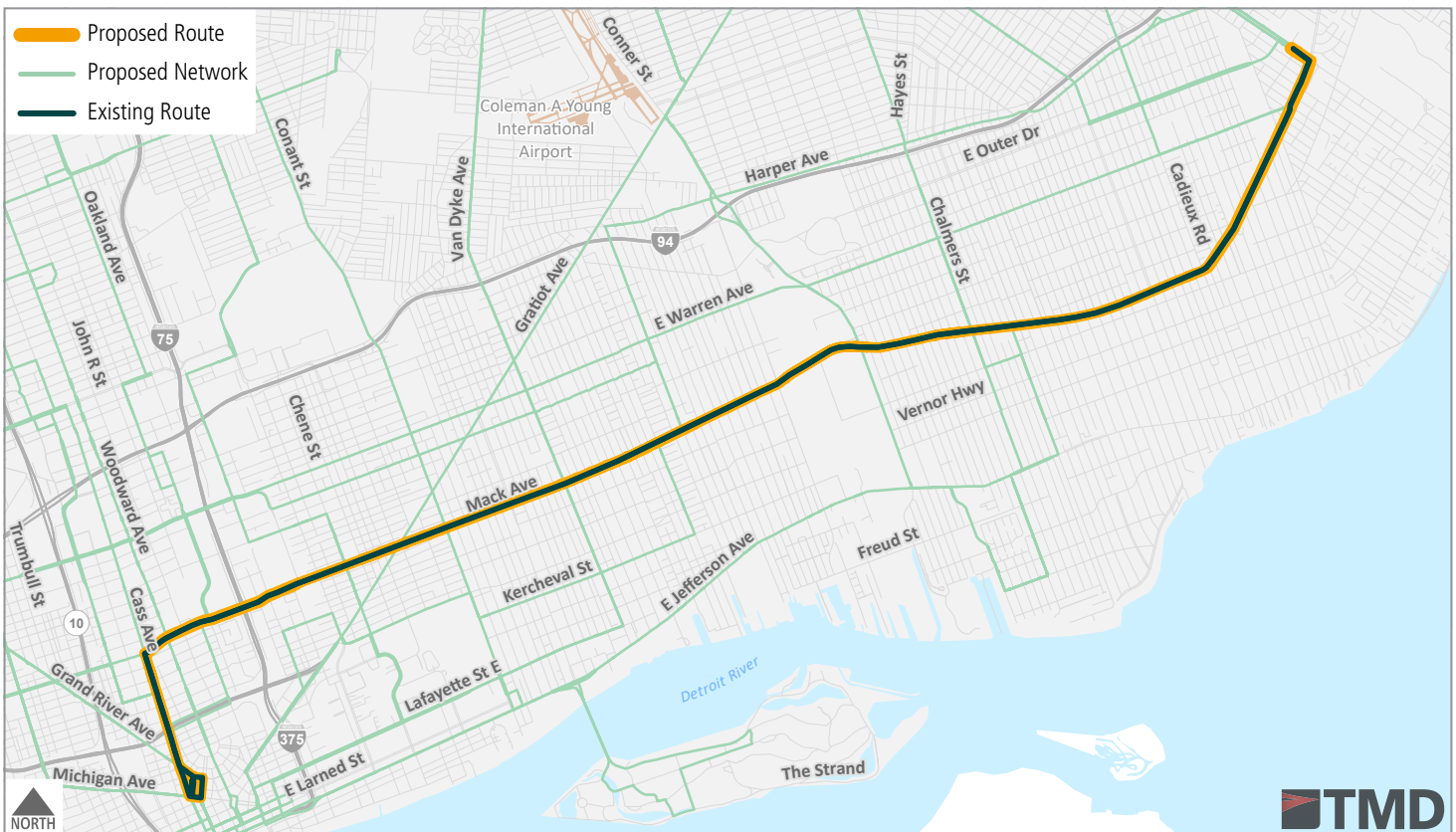
NO ALIGNMENT CHANGE



### PROPOSED CHANGES

Route 31 will continue to operate between Rosa Parks Transit Center and Moross Rd/Mack Ave via its current alignment.

SCHEDULED SERVICE	EXISTING METRICS		PROPOSED	
	FREQUENCY (MIN)	SPAN	FREQUENCY (MIN)	SPAN
<b>Weekday</b>	30	5 a.m. - 11:45 p.m.	15	4 a.m. - 1 a.m.
<b>Saturday</b>	30	6 a.m. - 11:45p.m.	15	4 a.m. - 1 a.m.
<b>Sunday</b>	60	7 a.m. - 9:45 p.m.	15	4 a.m. - 1 a.m.



# ROUTE 32 McNichols

## Tier 2

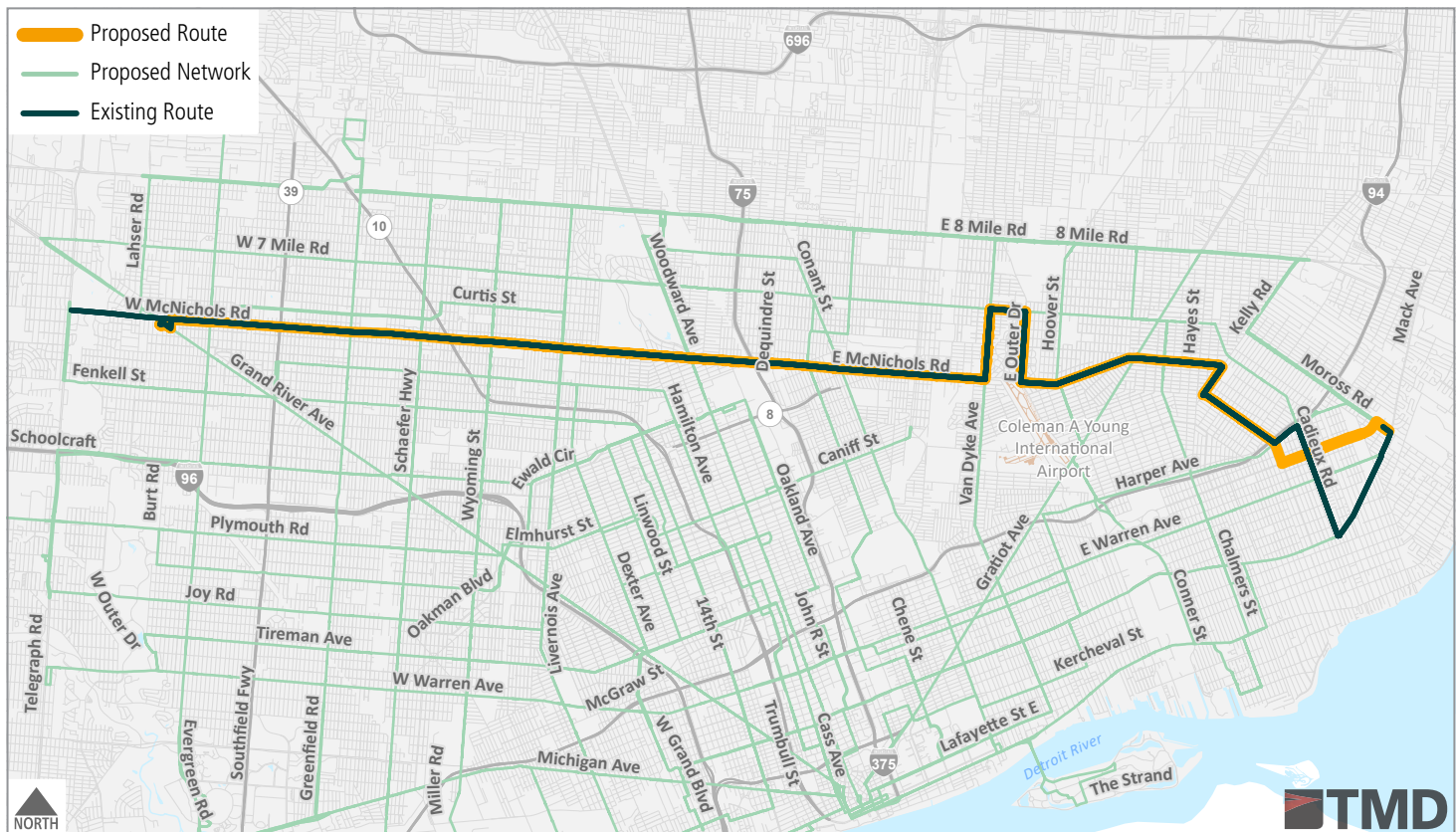
### ROUTING ADJUSTMENT



### PROPOSED CHANGES

Route 32 will continue to operate between the Old Redford Meijer Transit Hub and the east side via the current McNichols Rd alignment. On the east end at Whittier St/Harper Ave, buses will operate south on Whittier to E Outer Dr and east on Chandler Park Dr to terminate at Moross Rd/Mack Ave. This adds new service for residents of Cornerstone Village and opens up the entire route to improved network access with the all-day connection at Moross/Mack. Current Route 32 customers on Cadieux can access Route 7 as an alternative, along with Route 8 or Route 31. On the west end, buses will terminate at the Old Redford Meijer Transit Hub at all times. Service west to Telegraph Rd via McNichols Rd (currently weekday only) will be provided by Route 18 Fenkell on all days.

SCHEDULED SERVICE	EXISTING METRICS		PROPOSED	
	FREQUENCY (MIN)	SPAN	FREQUENCY (MIN)	SPAN
<b>Weekday</b>	30	5 a.m. - 1:45 a.m.	15	4 a.m. - 1 a.m.
<b>Saturday</b>	60	5:30 a.m. - 12:30 a.m.	30	4 a.m. - 1 a.m.
<b>Sunday</b>	60	7 a.m. - 10:15 p.m.	30	4 a.m. - 1 a.m.



# ROUTE 38 Plymouth

## Tier 3

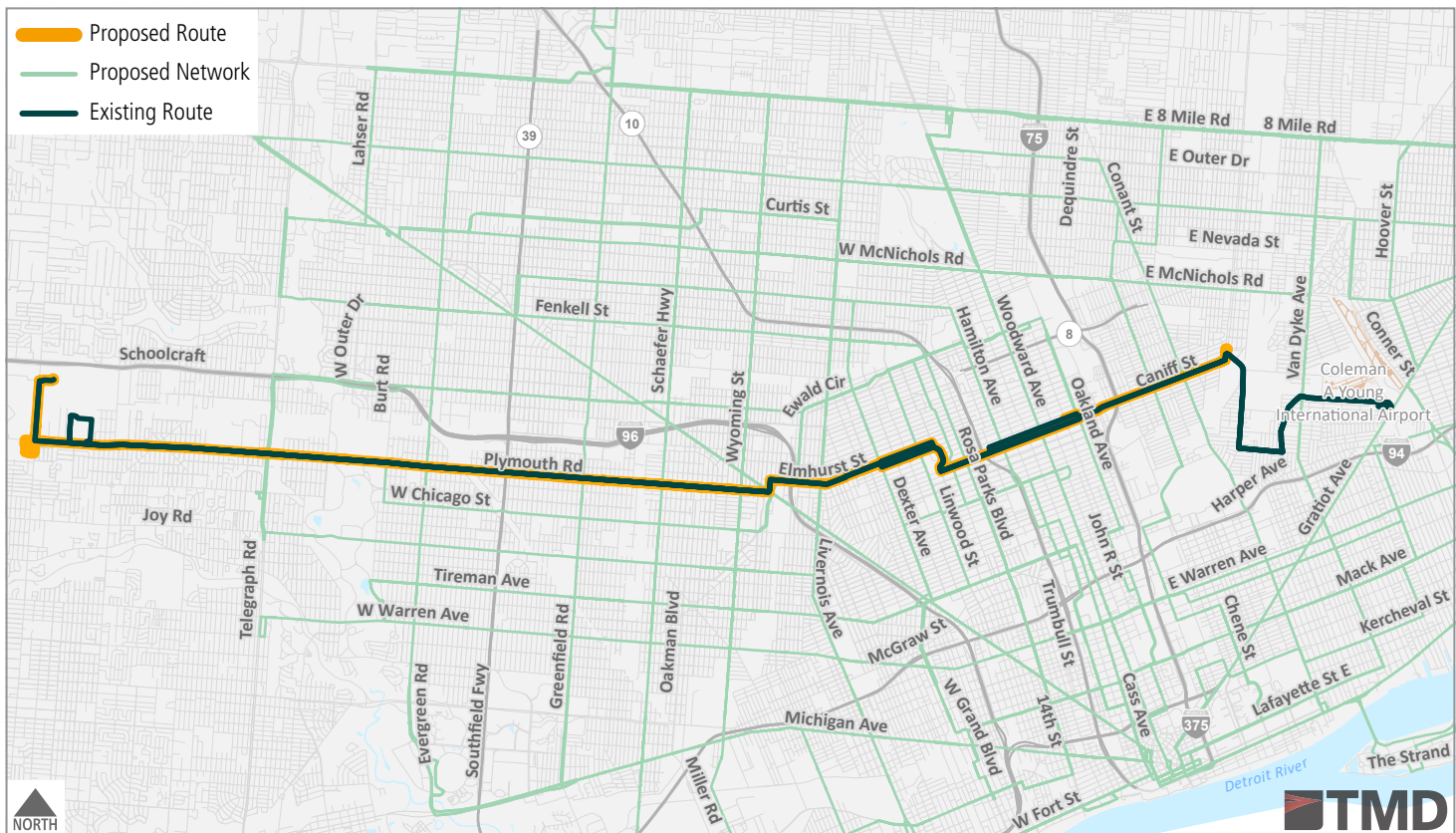
### ROUTING ADJUSTMENT



### PROPOSED CHANGES

Route 38 is proposed to operate between Livonia and Buffalo Charles (Caniff St/Mound Rd) via Hamtramck. At its west end, Route 38 will still terminate at the Millenium Park Meijer plaza with an improved stop location proposed. It is also proposed that buses will circulate through the Wonderland plaza to provide direct access to Walmart and Target. Within Detroit and Hamtramck, Route 38 will follow its current alignment to Caniff St/Mound Rd where it will terminate.

SCHEDULED SERVICE	EXISTING METRICS		PROPOSED	
	FREQUENCY (MIN)	SPAN	FREQUENCY (MIN)	SPAN
<b>Weekday</b>	60	3:45 a.m. - 12 a.m.	30	4 a.m. - 1 a.m.
<b>Saturday</b>	60	3:45 a.m. - 11 p.m.	30	4 a.m. - 1 a.m.
<b>Sunday</b>	60	3:45 a.m. - 8:15 p.m.	30	4 a.m. - 1 a.m.



# ROUTE 39 Puritan

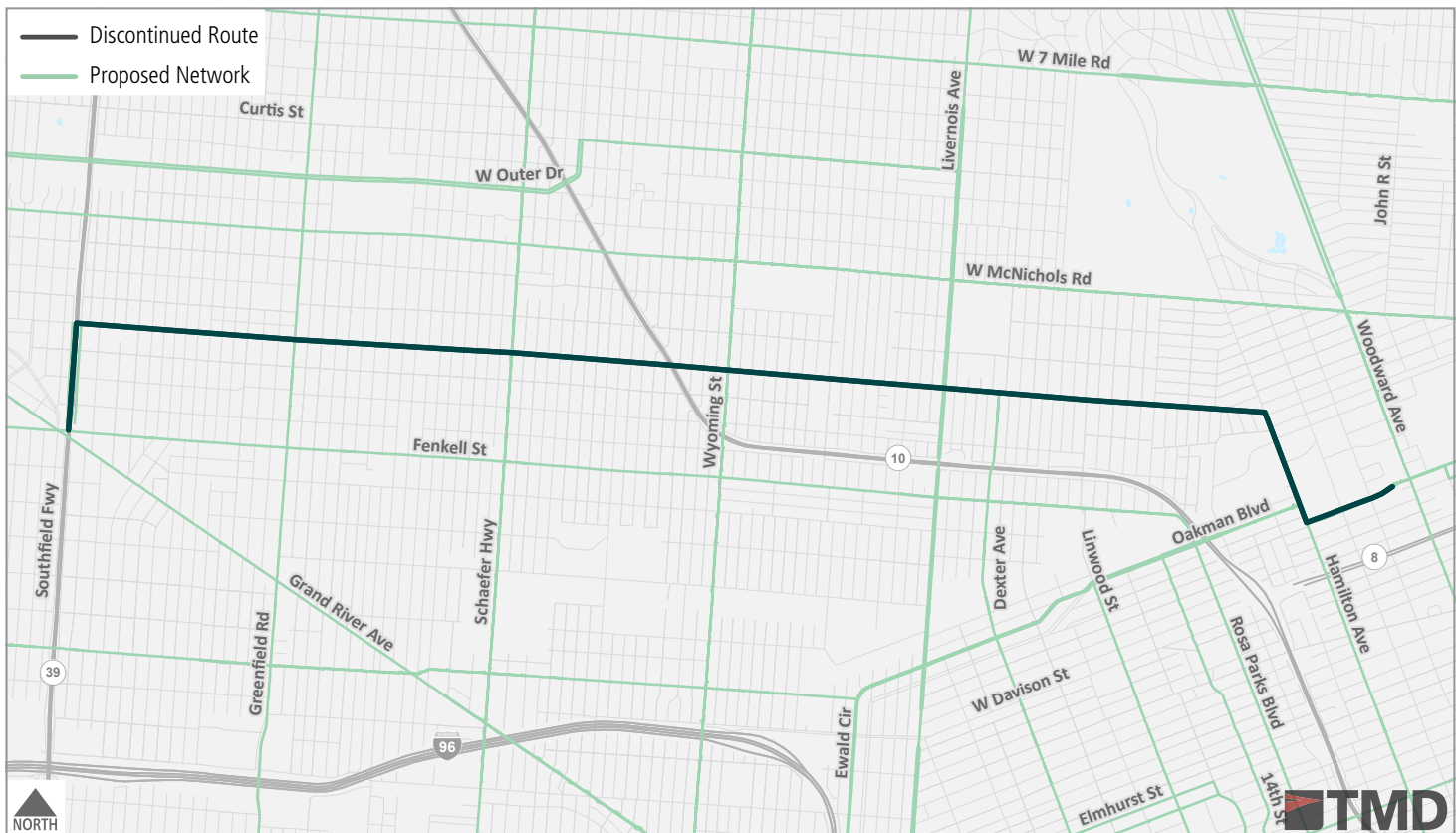


CONSOLIDATED

## PROPOSED CHANGES

Route 23 Hamilton and Route 39 Puritan will be combined to create a new one-seat ride between the westside and Downtown Detroit. Route 39 riders will no longer need to transfer to 4 Woodward for service to New Center, Midtown, or Downtown. Former Route 23 riders north of Puritan St will still have access to State Fair Transit Center or Downtown Detroit on Route 4 Woodward or the new 52 Chene.

SCHEDULED SERVICE	EXISTING METRICS		PROPOSED	
	FREQUENCY (MIN)	SPAN	FREQUENCY (MIN)	SPAN
<b>Weekday</b>	60	6 a.m. - 7:30 p.m.	--	--
<b>Saturday</b>	60	7 a.m. - 6:30 p.m.	--	--
<b>Sunday</b>	60	8 a.m. - 4:30 p.m.	--	--



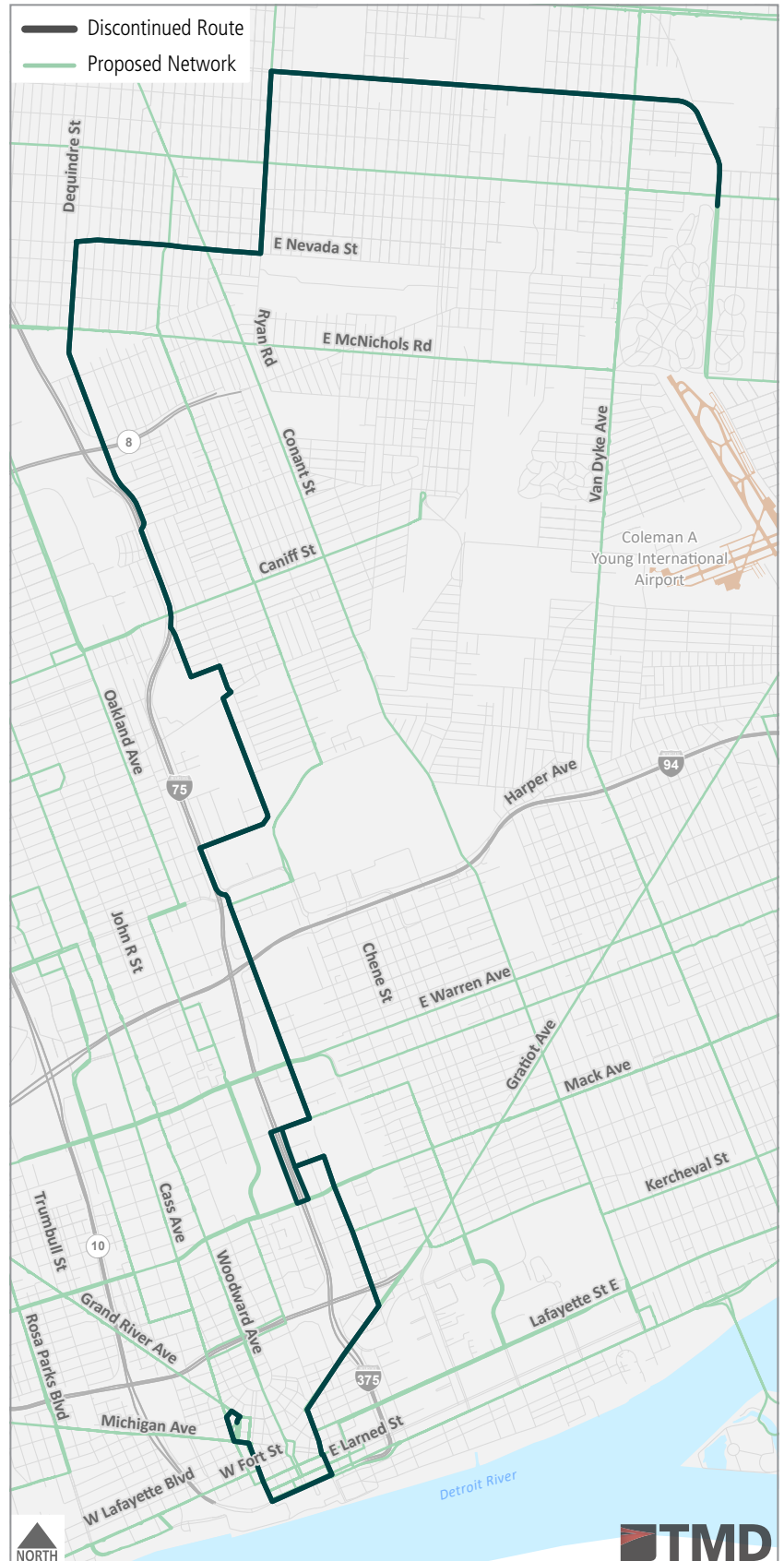
# ROUTE 40 Russell



REPLACED

## PROPOSED CHANGES

Route 40 is recommended for discontinuation, with alternative service available on the new 12 Conant, 52 Chene, or 67 Cadillac-Harper. Additional downtown connections are available on the 31 Mack or the proposed 29 Linwood-Mid-City.



SCHEDULED SERVICE	EXISTING METRICS	
	FREQUENCY (MIN)	SPAN
<b>Weekday</b>	60	6 a.m. - 8 p.m.
<b>Saturday</b>	--	--
<b>Sunday</b>	--	--

SCHEDULED SERVICE	PROPOSED	
	FREQUENCY (MIN)	SPAN
<b>Weekday</b>	--	--
<b>Saturday</b>	--	--
<b>Sunday</b>	--	--



# ROUTE 41 Schaefer

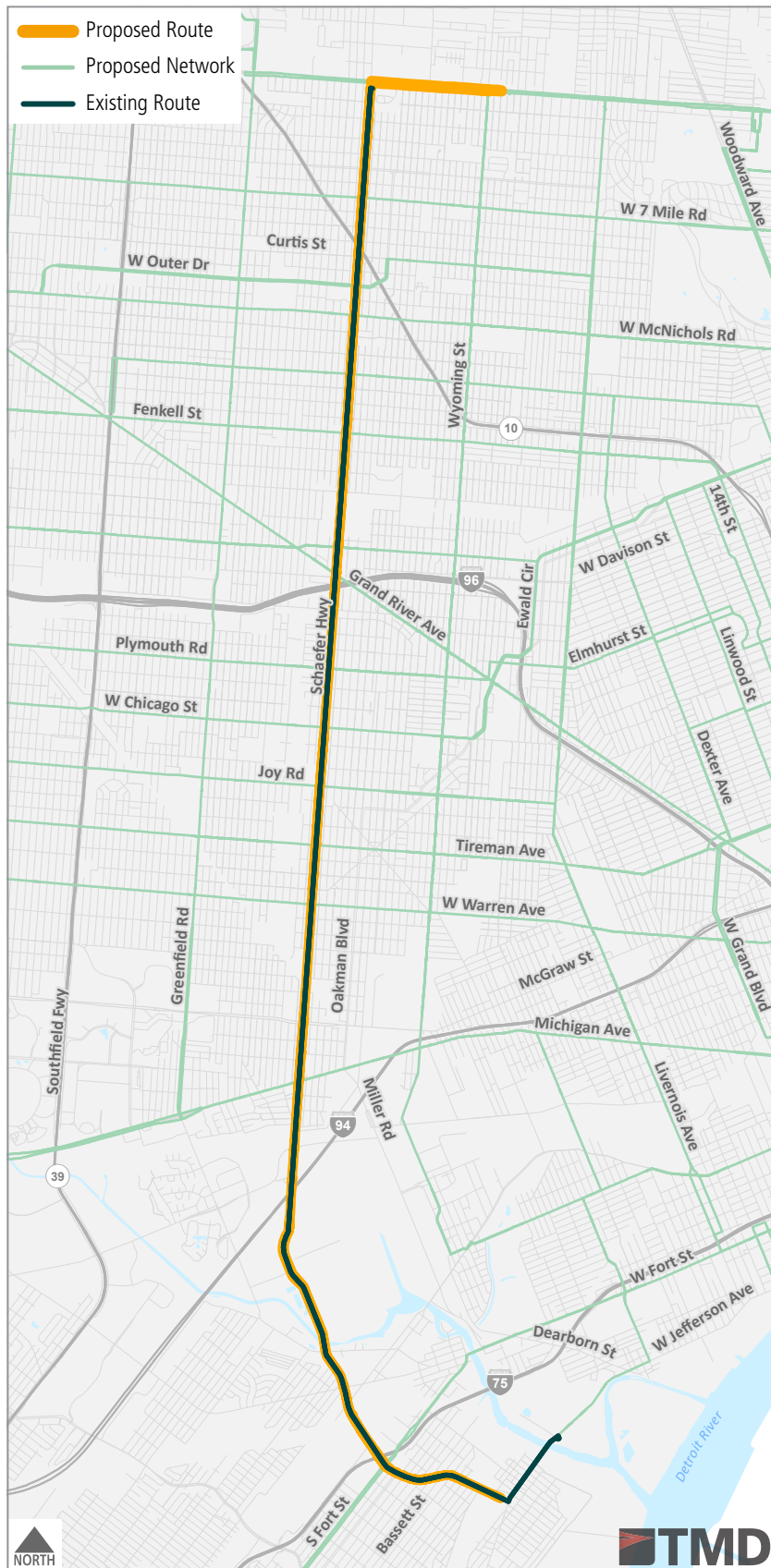
## Tier 3

### EXTENDED



### PROPOSED CHANGES

Route 41 will continue to operate between River Rouge and 8 Mile Rd via Schaefer Rd/Hwy via the current alignment. At 8 Mile Rd, buses will continue east to Wyoming Ave providing new connections to shopping, jobs, and Henry Ford Kingswood Hospital.



SCHEDULED SERVICE	EXISTING METRICS	
	FREQUENCY (MIN)	SPAN
<b>Weekday</b>	60	6 a.m. - 10:30 p.m.
<b>Saturday</b>	60	7 a.m. - 9:15 p.m.
<b>Sunday</b>	60	6:45a.m. - 9:15 p.m.

SCHEDULED SERVICE	PROPOSED	
	FREQUENCY (MIN)	SPAN
<b>Weekday</b>	30	4 a.m. - 1 a.m.
<b>Saturday</b>	30	4 a.m. - 1 a.m.
<b>Sunday</b>	30	4 a.m. - 1 a.m.

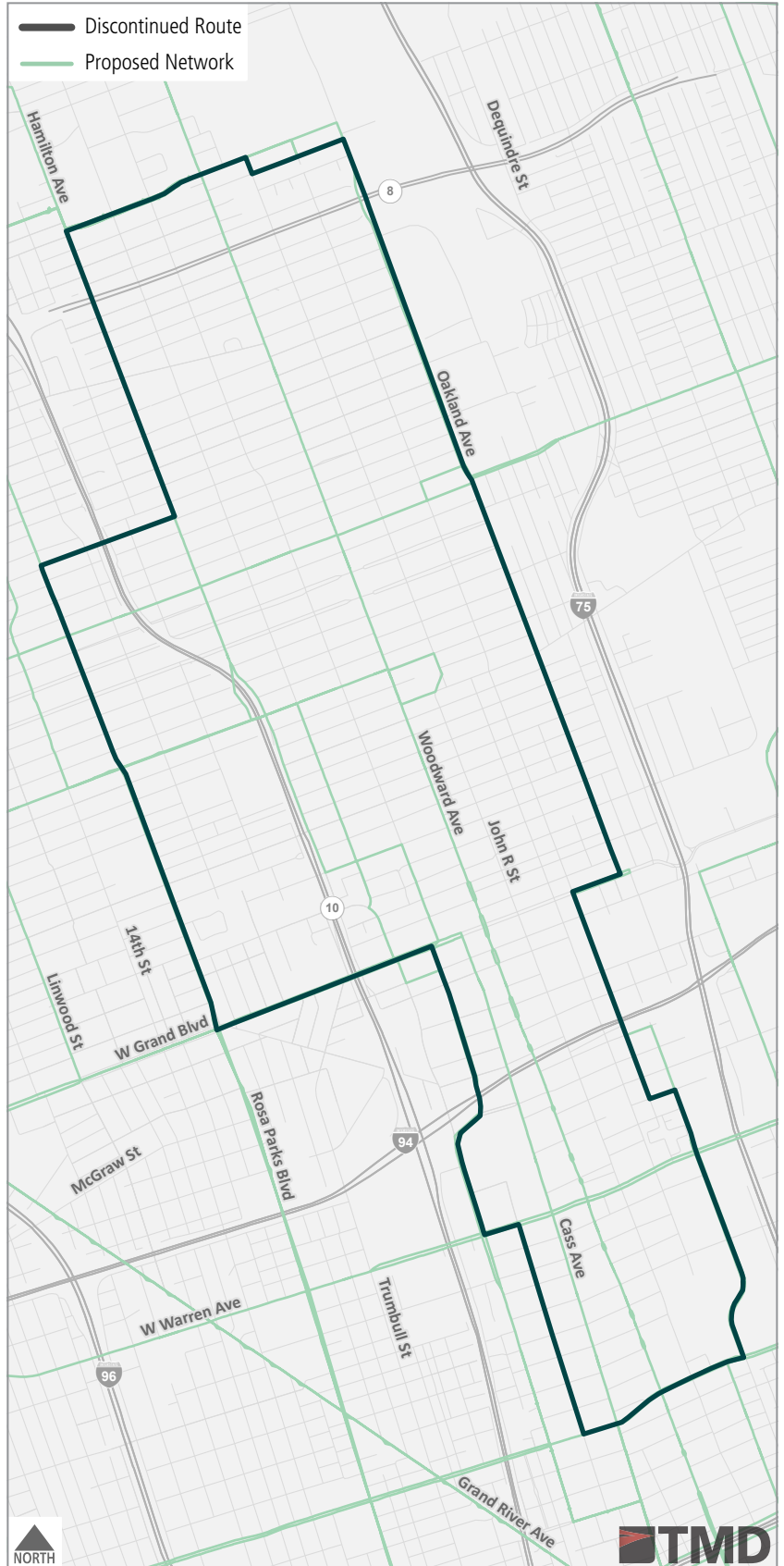
# ROUTE 42 Mid-City Loop



CONSOLIDATED

## PROPOSED CHANGES

Route 42 will be combined with Route 29 Linwood for an improved bidirectional Midtown circulator route that also connects with Downtown and Rosa Parks Transit Center (this new route is named 29 Linwood-Mid-City). The western portion of the loop will follow the current Route 29 alignment on Linwood Ave between Oakman Blvd and W Grand Blvd. It will then operate via Rosa Parks Blvd between Grand Blvd and Michigan Ave. The route will continue on Michigan Ave to Cass Ave, past Rosa Parks Transit Center, and use the Fisher Fwy service road to connect with Brush St. It will then resume the eastern alignment of the Mid-City Loop at Mack Ave/St. Antoine St, and continue to end at Woodward Ave/Manchester Pkwy. Riders on the western half of the current Route 42 (Hamilton Ave, Rosa Parks Blvd, 2nd Ave) can utilize Routes 16, 18, or 23 as an alternative.



SCHEDULED SERVICE	EXISTING METRICS	
	FREQUENCY (MIN)	SPAN
<b>Weekday</b>	60	7:15 a.m. - 7 p.m.
<b>Saturday</b>	60	7:15 a.m. - 7 p.m.
<b>Sunday</b>	60	8:15 a.m. - 6 p.m.

SCHEDULED SERVICE	PROPOSED	
	FREQUENCY (MIN)	SPAN
<b>Weekday</b>	--	--
<b>Saturday</b>	--	--
<b>Sunday</b>	--	--

# ROUTE 43 Schoolcraft

## Tier 3

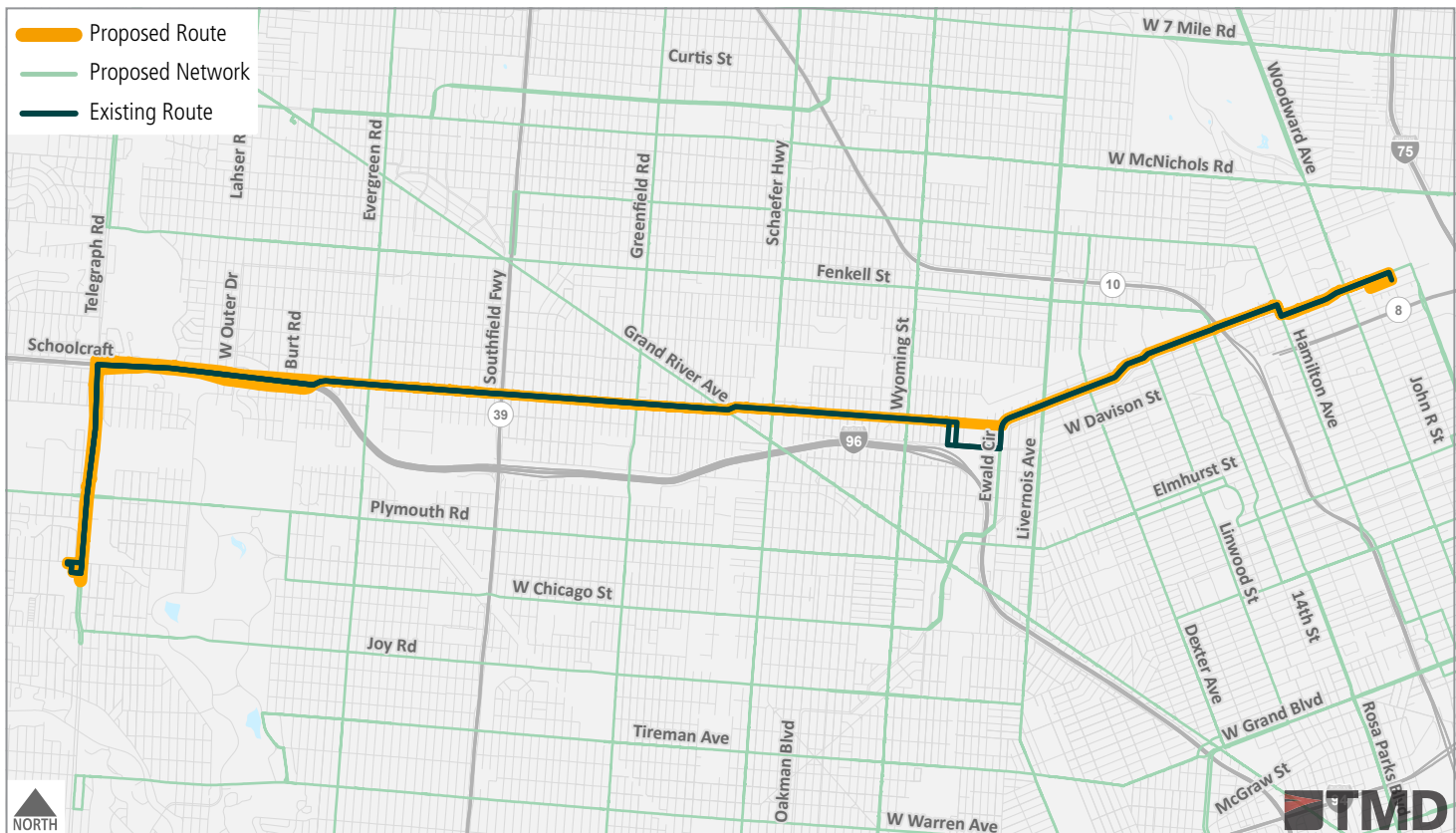
### ROUTING ADJUSTMENT



### PROPOSED CHANGES

Route 43 will continue to operate between Redford Plaza (Telegraph Rd) and Woodward Ave/Manchester St along its current alignment. It will be streamlined at Schoolcraft St/Ewald Cir to remain on Schoolcraft and not deviate the one block to Davison Ave. Between Ewald Cir/Schoolcraft St and Manchester/Woodward, Route 43 will share an alignment with Route 15 Chicago. This will allow for a combined frequency for riders traveling along this corridor.

SCHEDULED SERVICE	EXISTING METRICS		PROPOSED	
	FREQUENCY (MIN)	SPAN	FREQUENCY (MIN)	SPAN
<b>Weekday</b>	60	4:45 a.m. - 9:45 p.m.	30	4 a.m. - 1 a.m.
<b>Saturday</b>	45	7: a.m. -7:15 p.m.	30	4 a.m. - 1 a.m.
<b>Sunday</b>	45	10 a.m. - 7 p.m.	30	4 a.m. - 1 a.m.





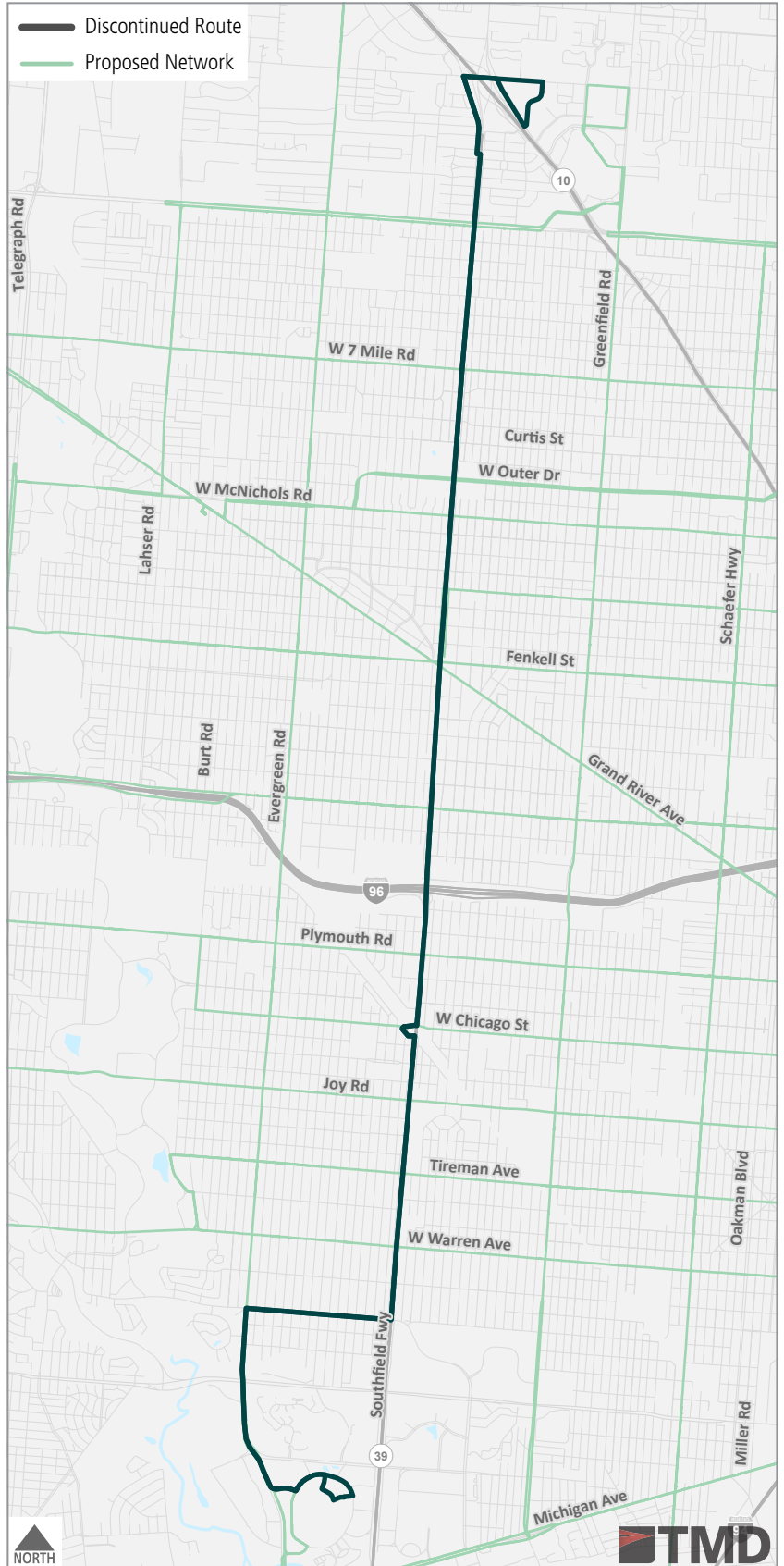
# ROUTE 46 Southfield



REPLACED

## PROPOSED CHANGES

The weekday peak hour-only Route 46 is recommended for discontinuation with its resources invested elsewhere in the network. As an alternative, riders can utilize Route 10 Greenfield or Route 60 Evergreen.



SCHEDULED SERVICE	EXISTING METRICS	
	FREQUENCY (MIN)	SPAN
<b>Weekday</b>	--	5:45 a.m. - 8:15 p.m.
<b>Saturday</b>	--	--
<b>Sunday</b>	--	--

SCHEDULED SERVICE	PROPOSED	
	FREQUENCY (MIN)	SPAN
<b>Weekday</b>	--	--
<b>Saturday</b>	--	--
<b>Sunday</b>	--	--

# ROUTE 47 Tireman

## Tier 3

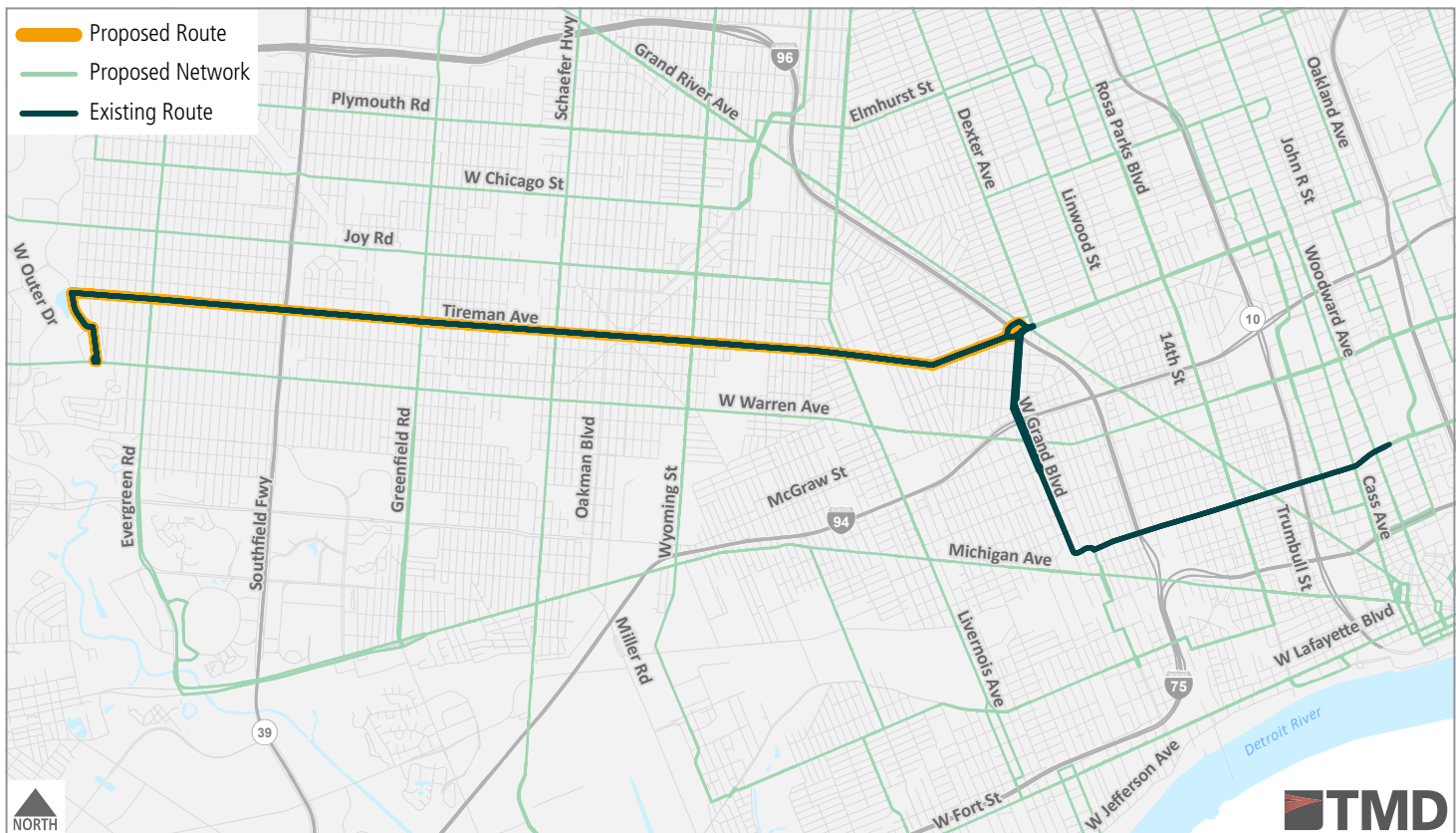
### ROUTING ADJUSTMENT



### PROPOSED CHANGES

Route 47 will operate between Warren Ave/Pierson St and Grand River Ave via the current Tireman St alignment at all times. Current Route 47 riders on W Grand Blvd will have access to the new 11 Clairmount or 27 Joy routes. Westside customers can transfer at Grand River to a 16 Dexter or 3 Grand River bus for service to Midtown or Downtown, or ride 8 Warren as an alternative.

SCHEDULED SERVICE	EXISTING METRICS		PROPOSED	
	FREQUENCY (MIN)	SPAN	FREQUENCY (MIN)	SPAN
<b>Weekday</b>	50	5:10 a.m. - 7:35 p.m.	30	4 a.m. - 1 a.m.
<b>Saturday</b>	--	--	30	4 a.m. - 1 a.m.
<b>Sunday</b>	--	--	30	4 a.m. - 1 a.m.



# ROUTE 52 Chene

## Tier 2

### ROUTING ADJUSTMENT



### PROPOSED CHANGES

Route 52 will now operate between Rosa Parks Transit Center and State Fair Transit Center. The route will be streamlined to operate on E Lafayette St in Lafayette Park. Customers on St. Aubin St, Orleans St, or Antietam Ave can walk to Lafayette St or Gratiot Ave for service. The route will operate on Russell St between Canfield St and E Grand Blvd to better serve key destinations. At Joseph Campau St/ Nevada Ave, buses will continue north on the former Route 12 alignment to E Outer Dr and west to the new State Fair Transit Center and Meijer shopping connection. Current customers on Nevada Ave east of Conant St can walk to the new Route 12 or Route 52 or walk to buses on McNichols Rd or 7 Mile Rd and transfer at Woodward for alternative service to Downtown, or at Van Dyke St for service to the east side.



SCHEDULED SERVICE	EXISTING METRICS	
	FREQUENCY (MIN)	SPAN
<b>Weekday</b>	60	6 a.m. - 10 p.m.
<b>Saturday</b>	60	6 a.m. - 10 p.m.
<b>Sunday</b>	60	8 a.m. - 7:45 p.m.

SCHEDULED SERVICE	PROPOSED	
	FREQUENCY (MIN)	SPAN
<b>Weekday</b>	15	4 a.m. - 1 a.m.
<b>Saturday</b>	30	4 a.m. - 1 a.m.
<b>Sunday</b>	30	4 a.m. - 1 a.m.

# ROUTE 54 Wyoming

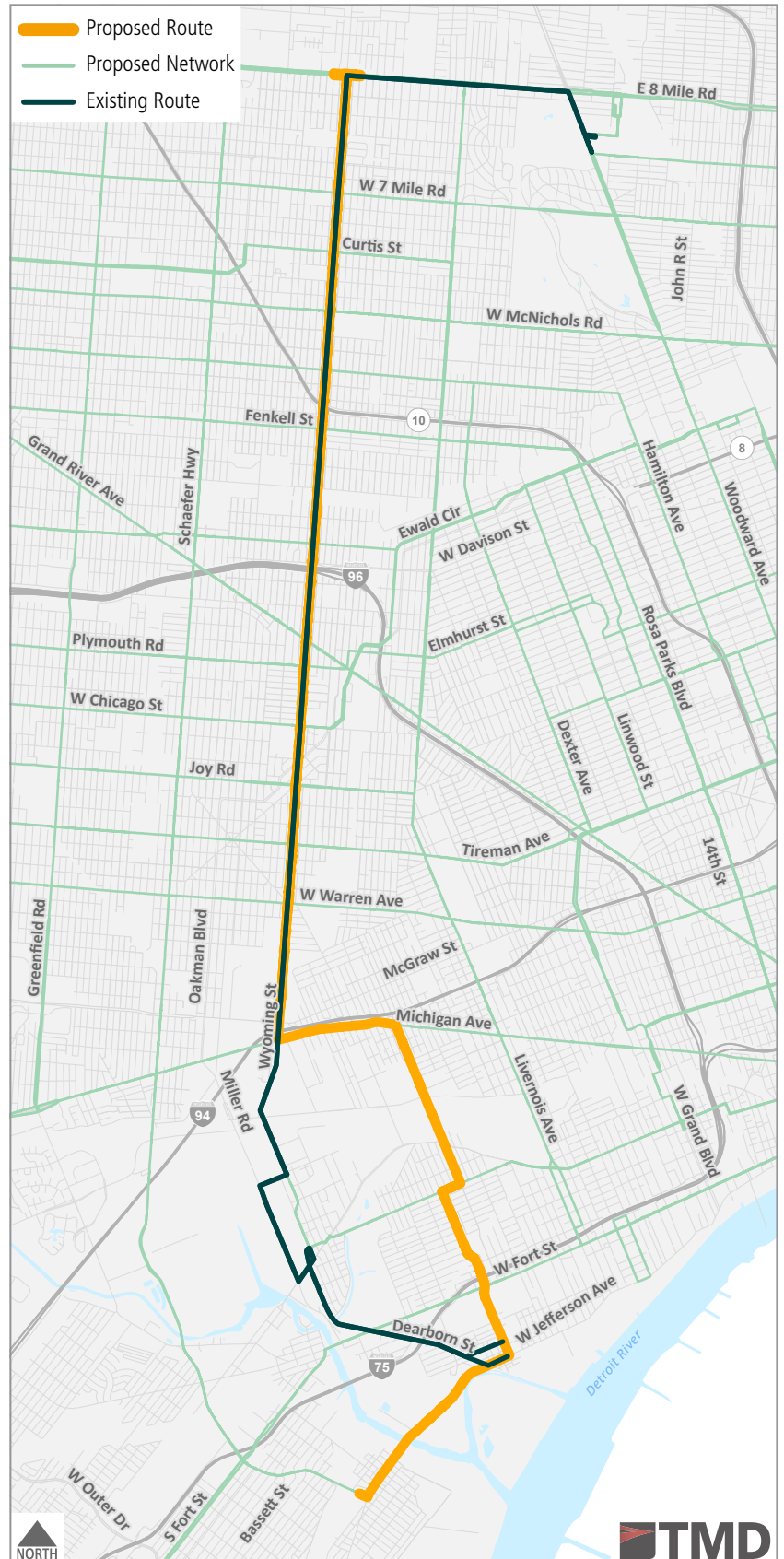
## Tier 3

### ROUTING ADJUSTMENT



### PROPOSED CHANGES

Route 54 will be adjusted to operate between 8 Mile Rd/Wyoming St and Jefferson Ave/Coolidge Hwy in River Rouge. It will follow the current Wyoming St alignment to Wyoming St/Michigan Ave; from there buses will continue east on Michigan Ave to Central St and operate via Central St, Springwells St, and W End St in Southwest Detroit, opening new connections to jobs and shopping on Springwells St and a providing a new connection for the Southwest community. Customers on the former segment south of Michigan Ave will have access to rerouted 1 Vernor as an alternative. Customers seeking a crosstown connection can transfer at McNichols Rd or 7 Mile Rd, or at 8 Mile Rd for service to State Fair Transit Center and Meijer.



SCHEDULED SERVICE	EXISTING METRICS	
	FREQUENCY (MIN)	SPAN
<b>Weekday</b>	60	7 a.m. - 9 p.m.
<b>Saturday</b>	60	7 a.m. - 9 p.m.
<b>Sunday</b>	60	8 a.m. - 7:45 p.m.

SCHEDULED SERVICE	PROPOSED	
	FREQUENCY (MIN)	SPAN
<b>Weekday</b>	30	4 a.m. - 1 a.m.
<b>Saturday</b>	30	4 a.m. - 1 a.m.
<b>Sunday</b>	30	4 a.m. - 1 a.m.

# ROUTE 60 Evergreen

## Tier 2

NO ALIGNMENT CHANGE



### PROPOSED CHANGES

Route 60 will continue to operate between Fairlane Town Center and 10 Mile Road on its current alignment. A new transit hub is proposed for the west side of Fairlane Town Center to provide a closer connection to Henry Ford Medical Center and U of M-Dearborn.



SCHEDULED SERVICE	EXISTING METRICS	
	FREQUENCY (MIN)	SPAN
<b>Weekday</b>	30	5 a.m. - 11:15 p.m.
<b>Saturday</b>	30	6 a.m. - 11:15 p.m.
<b>Sunday</b>	60	7:15 a.m. - 10 p.m.

SCHEDULED SERVICE	PROPOSED	
	FREQUENCY (MIN)	SPAN
<b>Weekday</b>	15	4 a.m. - 1 a.m.
<b>Saturday</b>	30	4 a.m. - 1 a.m.
<b>Sunday</b>	30	4 a.m. - 1 a.m.

# ROUTE 67 Cadillac-Harper

## Tier 2

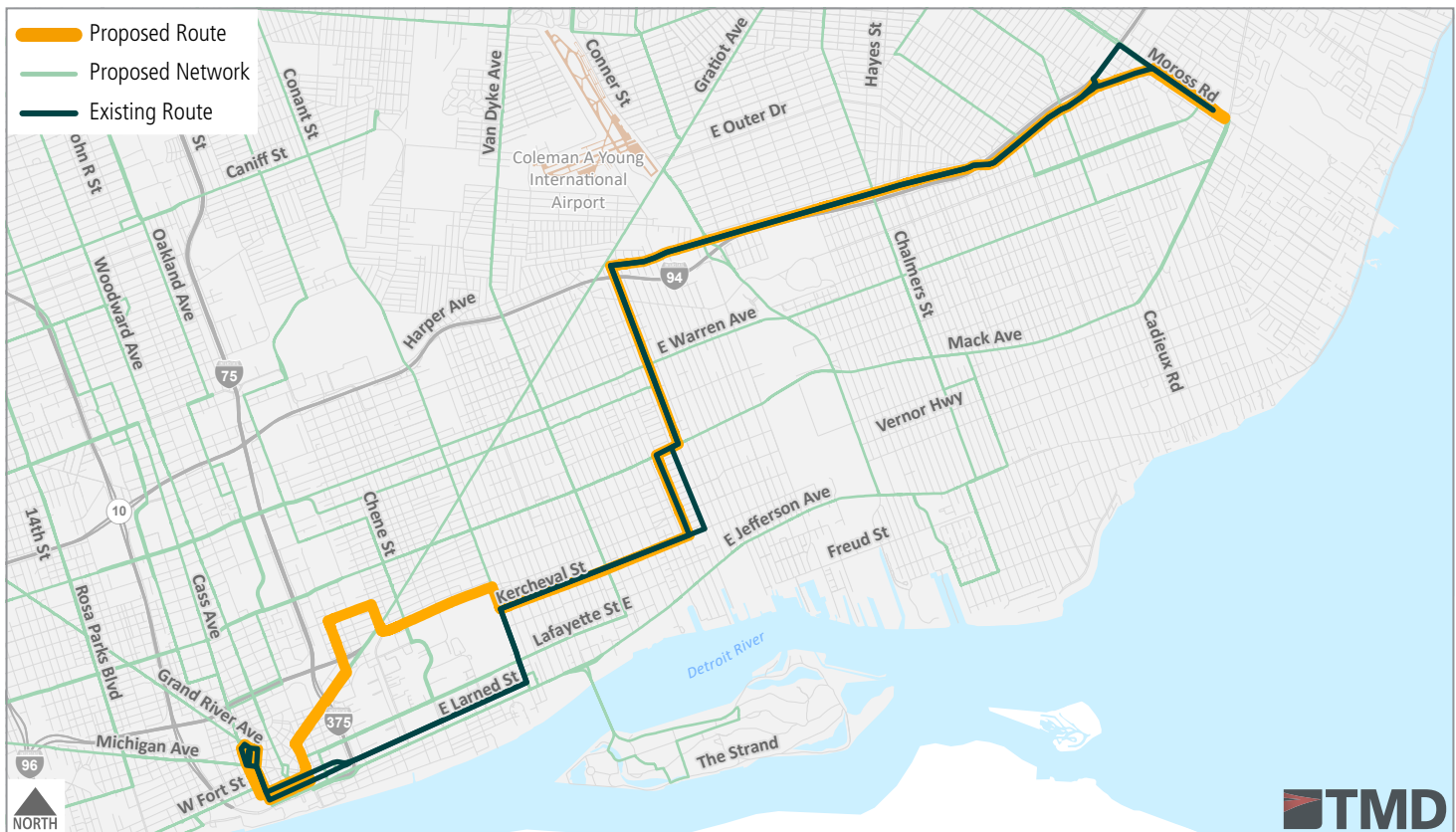
### ROUTING ADJUSTMENT



### PROPOSED CHANGES

Route 67 will continue to operate between Moross Rd/Mack Ave and Rosa Parks Transit Center via Harper Ave, Cadillac Ave, McClellan St, and Kercheval Ave, with a new connection to Eastern Market. At Kercheval Ave/Mt. Elliott St, buses will continue north and then west on Vernor Hwy to Eastern Market via St. Aubin St, Wilkins St, and Russell St. The route will then continue downtown via Gratiot Ave. Riders currently accessing the stops on Mt. Elliott Street between Kercheval Ave and E Lafayette St can walk to the new Route 67 or to Route 5. Customers currently utilizing the E Larned St stops can ride Route 5 or Route 9 as an alternative.

SCHEDULED SERVICE	EXISTING METRICS		PROPOSED	
	FREQUENCY (MIN)	SPAN	FREQUENCY (MIN)	SPAN
<b>Weekday</b>	60	6 a.m. - 11:45 p.m.	15	4 a.m. - 1 a.m.
<b>Saturday</b>	60	7 a.m. - 11:45 p.m.	30	4 a.m. - 1 a.m.
<b>Sunday</b>	60	7 a.m. - 8:45 p.m.	30	4 a.m. - 1 a.m.



# ROUTE 68 Chalmers

## Tier 3

### ROUTING ADJUSTMENT



### PROPOSED CHANGES

Route 68 will continue to operate along its current alignment between 8 Mile Rd and E. Jefferson Ave. The route will continue to serve Jefferson Chalmers via Lakewood St, Korte St, and Dickerson St, and terminate at Conner St/Jefferson Ave for connection to Route 13. Service on Freud St and St. Jean Ave is recommended for discontinuation due to low ridership.



SCHEDULED SERVICE	EXISTING METRICS	
	FREQUENCY (MIN)	SPAN
<b>Weekday</b>	60	6 a.m. - 8:30 p.m.
<b>Saturday</b>	60	6 a.m. - 8:30 p.m.
<b>Sunday</b>	60	7 a.m. - 6:30 p.m.

SCHEDULED SERVICE	PROPOSED	
	FREQUENCY (MIN)	SPAN
<b>Weekday</b>	30	4 a.m. - 1 a.m.
<b>Saturday</b>	30	4 a.m. - 1 a.m.
<b>Sunday</b>	30	4 a.m. - 1 a.m.

# ROUTE 70 GH Bridge/Belle Island Shuttle

## Tier 3

NEW ROUTE



### PROPOSED CHANGES

This new shuttle route will operate between Belle Isle (including Belle Isle Beach) and the new Gordie Howe International Bridge via downtown and Rosa Parks Transit Center. To the west, it will connect Downtown with Ralph C. Wilson Park, Historic Fort Wayne, and the planned multiuse path to Ontario on the Gordie Howe International Bridge. This route will be scheduled with more frequent service on weekends and holidays and during warmer months as demand warrants.

SCHEDULED SERVICE	EXISTING METRICS		PROPOSED	
	FREQUENCY (MIN)	SPAN	FREQUENCY (MIN)	SPAN
<b>Weekday</b>	--	--	30	5:30 a.m. - 10:30 p.m.
<b>Saturday</b>	--	--	30	5:30 a.m. - 10:30 p.m.
<b>Sunday</b>	--	--	30	5:30 a.m. - 10:30 p.m.

